



# VERDANT LUXE KITCHEN

INTERIOR  
DESIGN STUDIO  
OCT 2024



# Design Statement

This kitchen design concept centers on the harmony between natural materials and cutting-edge technology, creating an elegant and functional space with a modern aesthetic. The most striking feature is the flooring, which utilizes a combination of three different stones. The interplay between the high-gloss Oak Ripe Olive, dark gray tones, and the natural textures creates a sense of depth and movement on the floor, drawing the eye while setting the kitchen's overall ambiance. These contrasting tones highlight the kitchen's focus on both form and function, combining modern minimalism with the warmth of natural materials.

The countertops are made from black Dekton stone, chosen for its sleek appearance and durability. Its clean, dark surface contrasts beautifully with the light that floods the kitchen through the expansive windows, which offer views of the surrounding yard and maple trees, bringing nature into the space. Below these large windows, the sink is centrally positioned, along with an invisible dishwasher hidden behind a custom panel, ensuring that the kitchen maintains its seamless look.

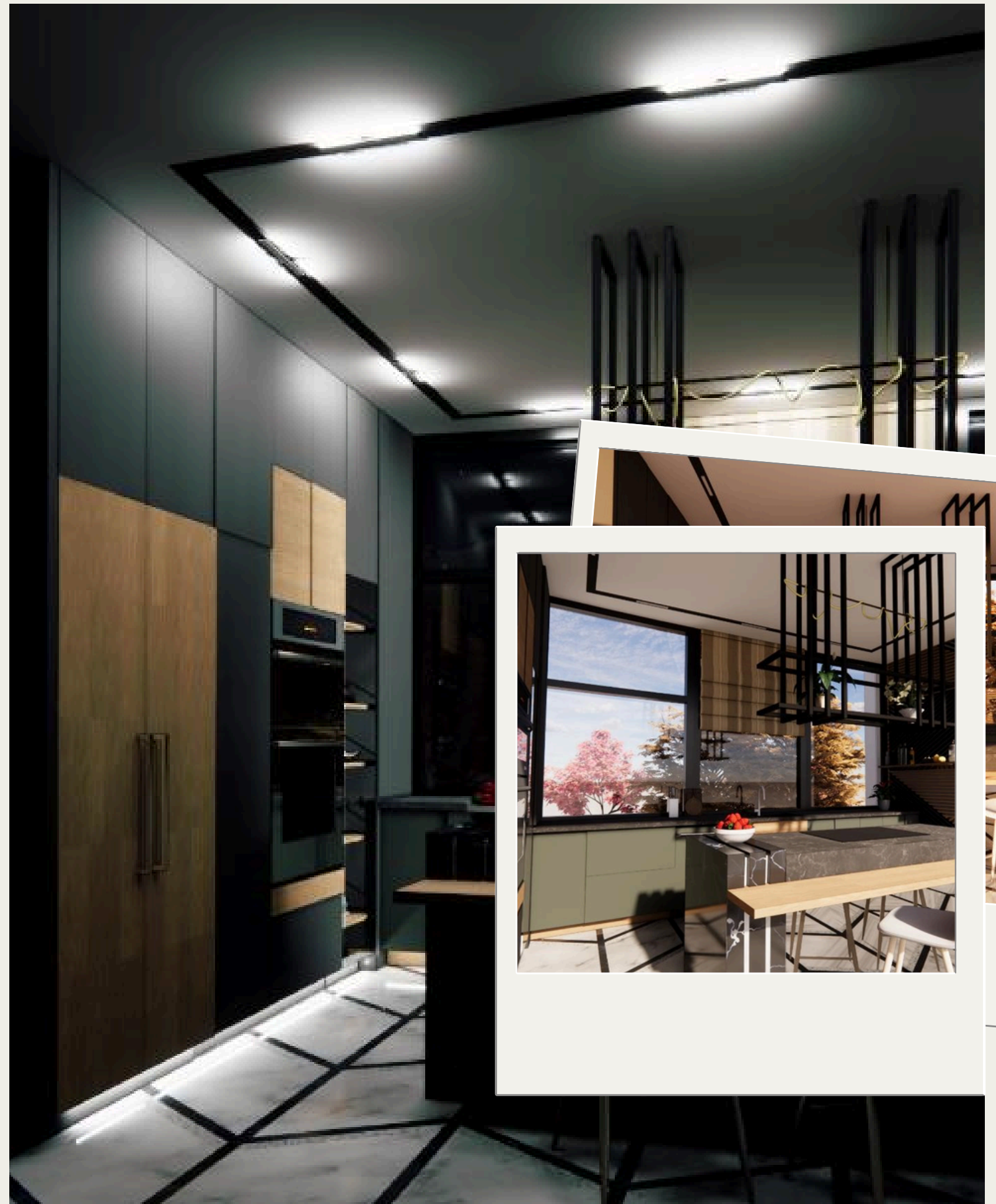
Cabinetry plays a key role in maintaining the clean, streamlined aesthetic of the space. Push-latch doors eliminate the need for hardware, keeping surfaces smooth and uninterrupted. Ceiling-height cabinets on the northeast side provide ample storage while emphasizing the verticality of the room. This is complemented by the custom-paneled refrigerator, which blends into the cabinetry, maintaining a cohesive look. Inside the cabinets, sensor LED lights provide convenient lighting and elevate the interior experience, allowing for easy access even in dim lighting.

A standout feature is the pull-shelf cabinet designed for easy appliance access, keeping the countertops uncluttered while ensuring functionality is not sacrificed. Additionally, a glass display case offers a place to showcase elegant dishware or art pieces, further enhancing the aesthetic appeal of the kitchen.

In the heart of the kitchen sits an elegant island, which is both a social hub and a work zone. It houses an induction cooktop and a downdraft range hood, ensuring a minimalistic look without the obstruction of a traditional overhead hood. The island also features a curved drop-down table, creating a perfect spot for casual dining or gathering with family and friends. Above the island, a custom black metal shelf bracket supports modern rope-style lighting, which doubles as a plant display, continuing the kitchen's connection to the natural world.

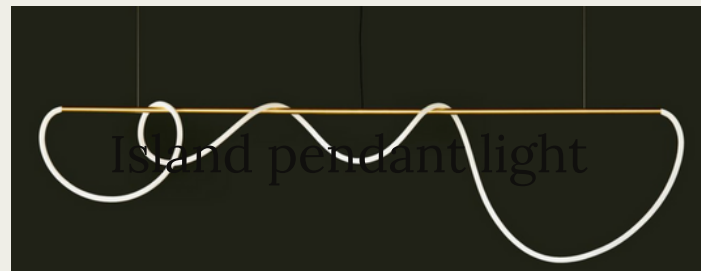
On the dining room side, a mirrored surface on the cabinetry reflects the unique flooring design, visually expanding the space and creating an interplay of light and reflection. The cabinet also includes a wine fridge and a display case that can be used for bottles, books, or decor items, seamlessly blending practicality with visual interest.

This kitchen design is a balance of aesthetic appeal and functionality, with every detail thoughtfully curated to create a timeless, sophisticated space. From the combination of rich textures and natural materials to the integration of modern conveniences, this kitchen serves as a focal point for the home, elevating everyday living while providing the ultimate in style and efficiency.

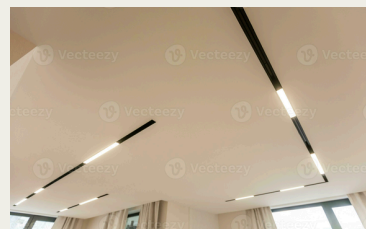




# Design Concept Board



Island pendant light



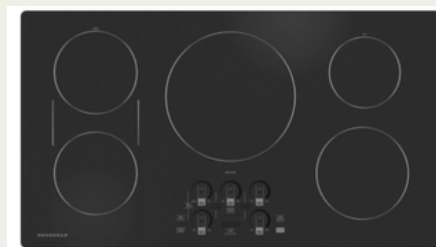
stripe lights



Bocsh downdraft hood



Riff pull down sink faucet



Monogram induction cook top



Thermador wine cooler



Cairn under mount sink



Subzero custom panel fridge



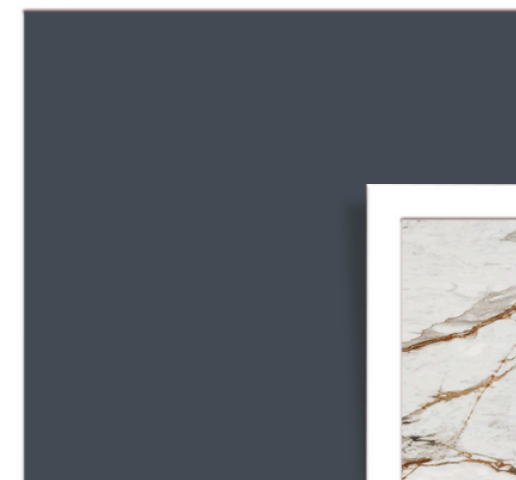
Thermador 24" custom panel dishwasher



Monogram French door oven/microwave



High gloss oak olive cabinet door



Charcoal oak cabinet door



Dekton floor



Wood grain cabinet door

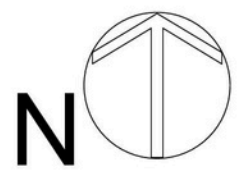
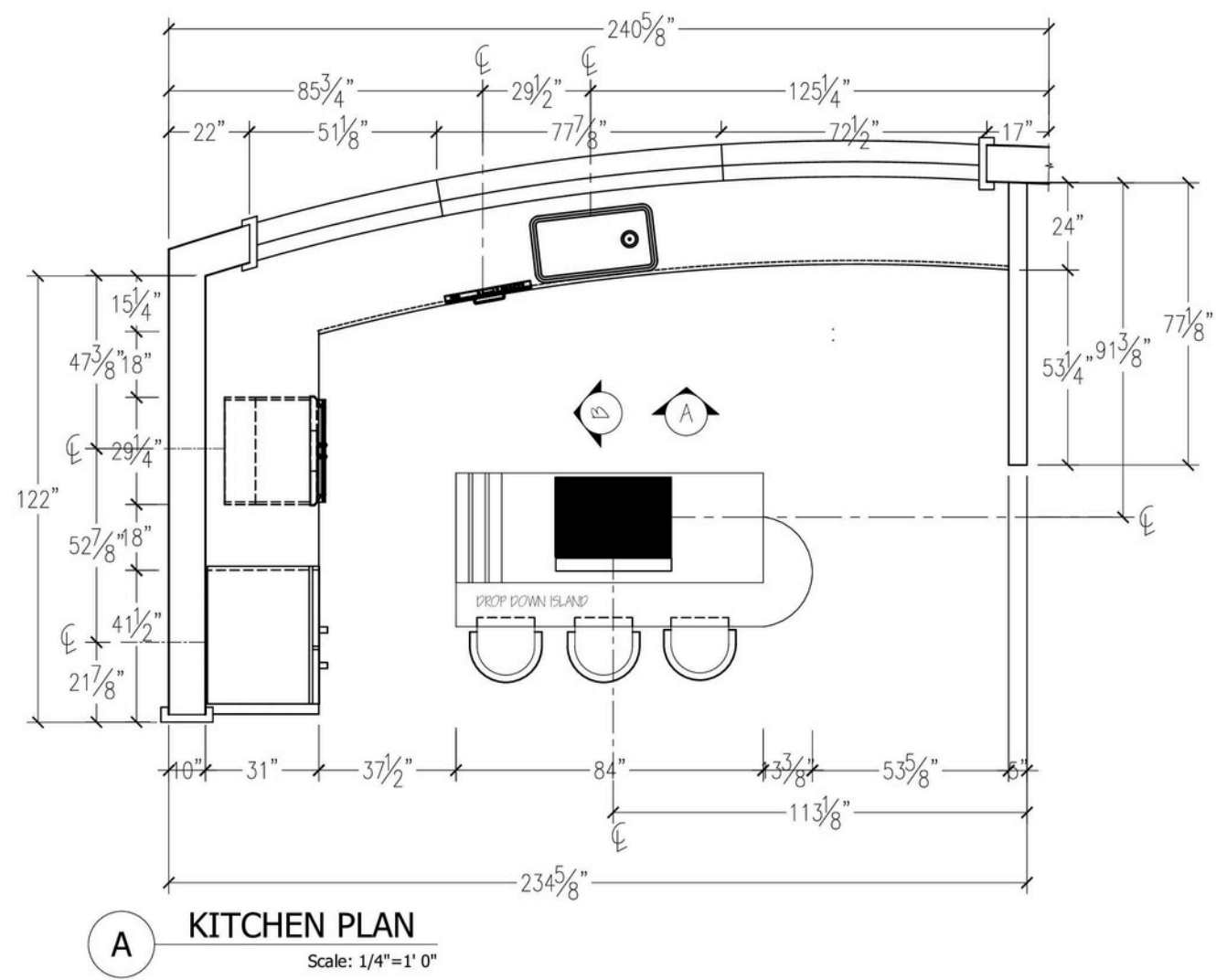


Dekton countertop



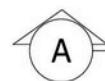
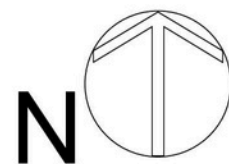
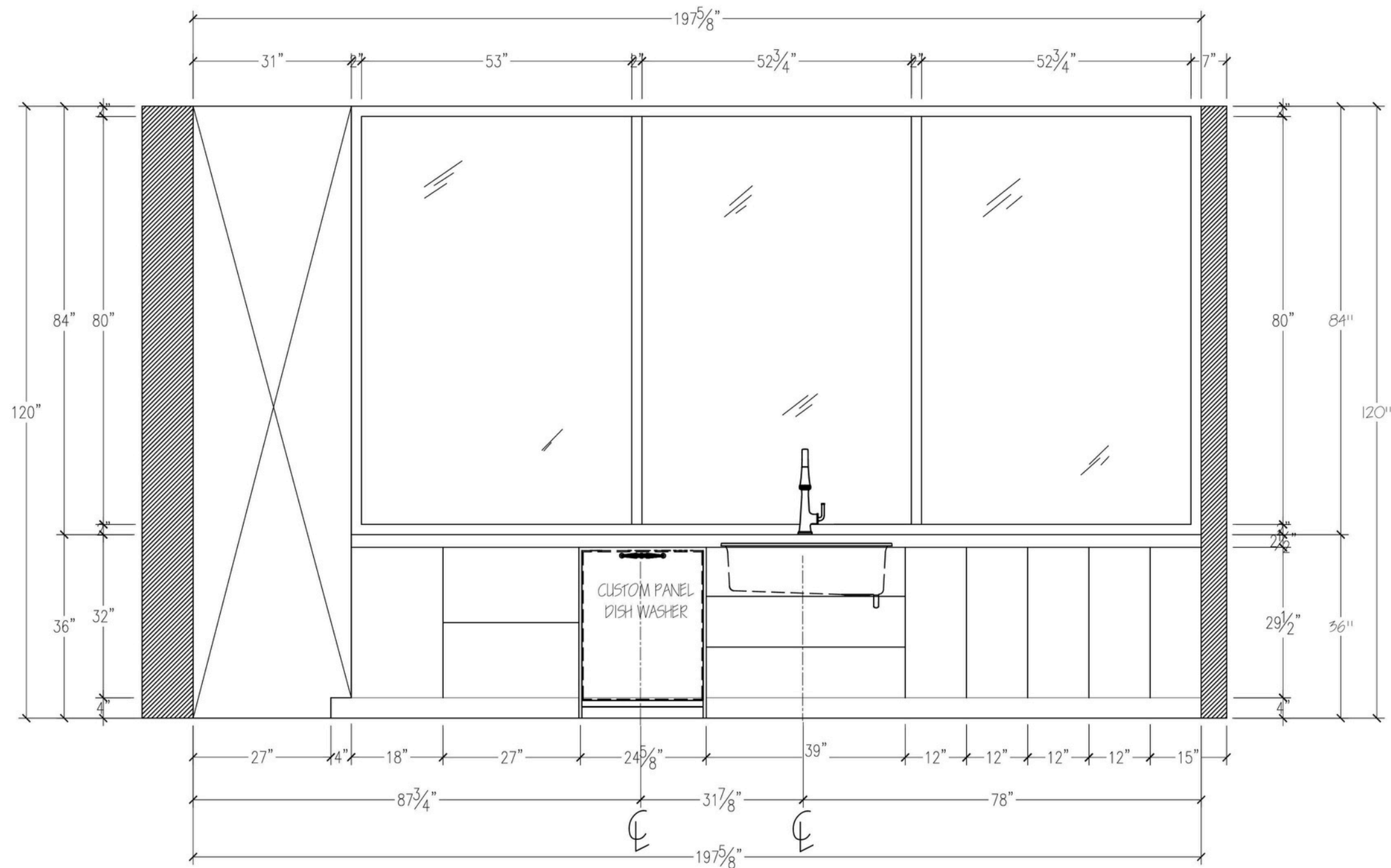
Dekton floor





ALL DIMENSIONS AND SIZE DESIGNATIONS GIVEN ARE SUBJECT TO VERIFICATION ON JOB SITE & ADJUSTMENT TO FIT JOB CONDITIONS	<div><div><div>NKBA</div><div>The Finest Professionals in the Kitchen &amp; Bath Industry</div><div>National Kitchen &amp; Bath Association<sup>SM</sup></div></div></div>		DESIGNED FOR	BY		DATE	BY	SCALE	DWG NO
			CLIENT NAME		DWN			1/4"=1'0"	1
					REV				





NORTH EAST WALL KITCHEN ELEVATION

Scale: 1/2" = 1' 0"

ALL DIMENSIONS AND SIZE DESIGNATIONS GIVEN ARE SUBJECT TO VERIFICATION ON JOB SITE & ADJUSTMENT TO FIT JOB CONDITIONS



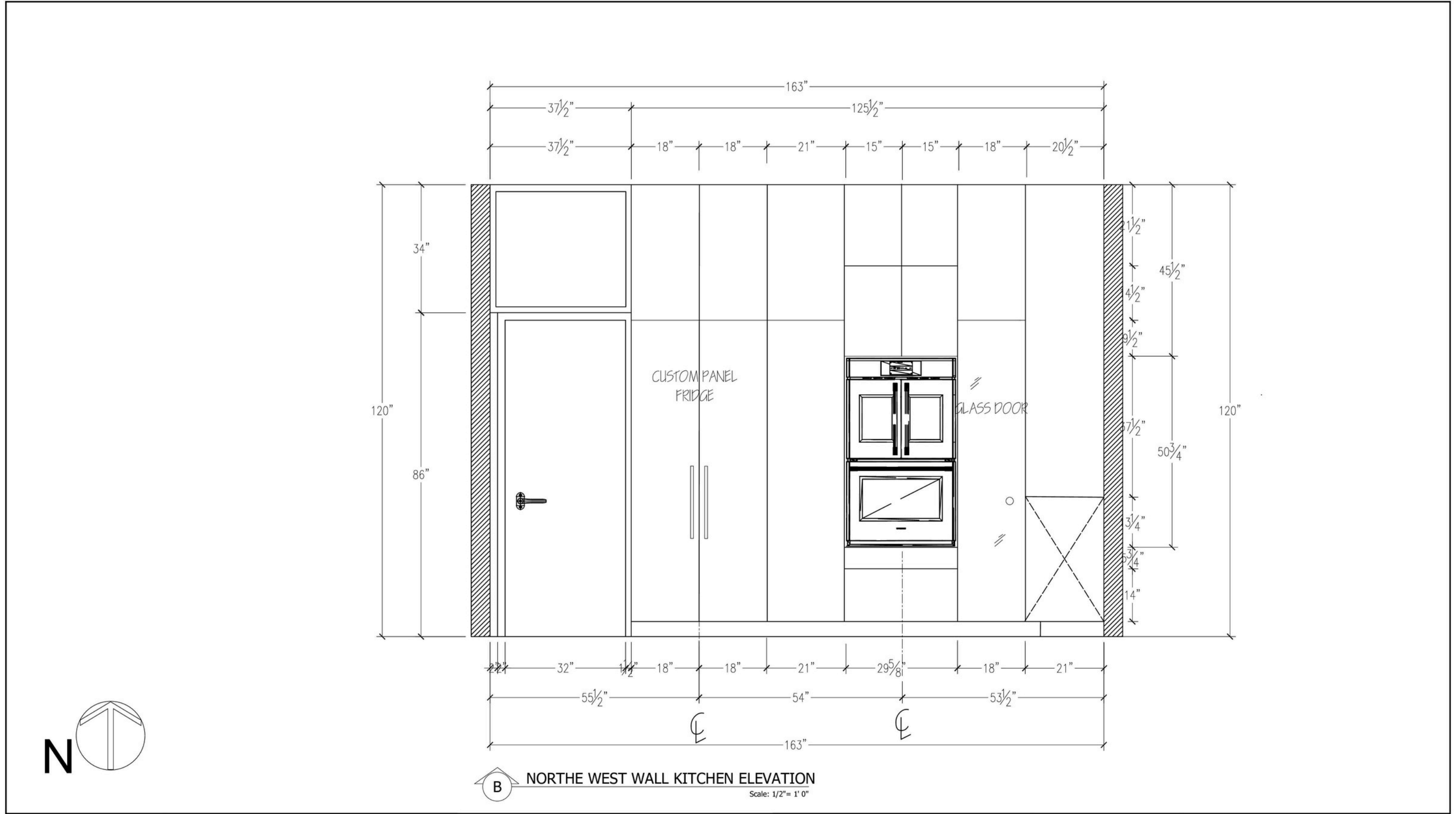
DESIGNED FOR

CLIENT NAME

BY

	DATE	BY	SCALE	DWG NO
DWN			1/2" = 1'0"	2
REV				





ALL DIMENSIONS AND SIZE DESIGNATIONS GIVEN ARE SUBJECT TO VERIFICATION ON JOB SITE & ADJUSTMENT TO FIT JOB CONDITIONS



DESIGNED FOR

CLIENT NAME

BY

	DATE	BY	SCALE	DWG NO
DWN				
REV				

1/2" = 1'0"

3









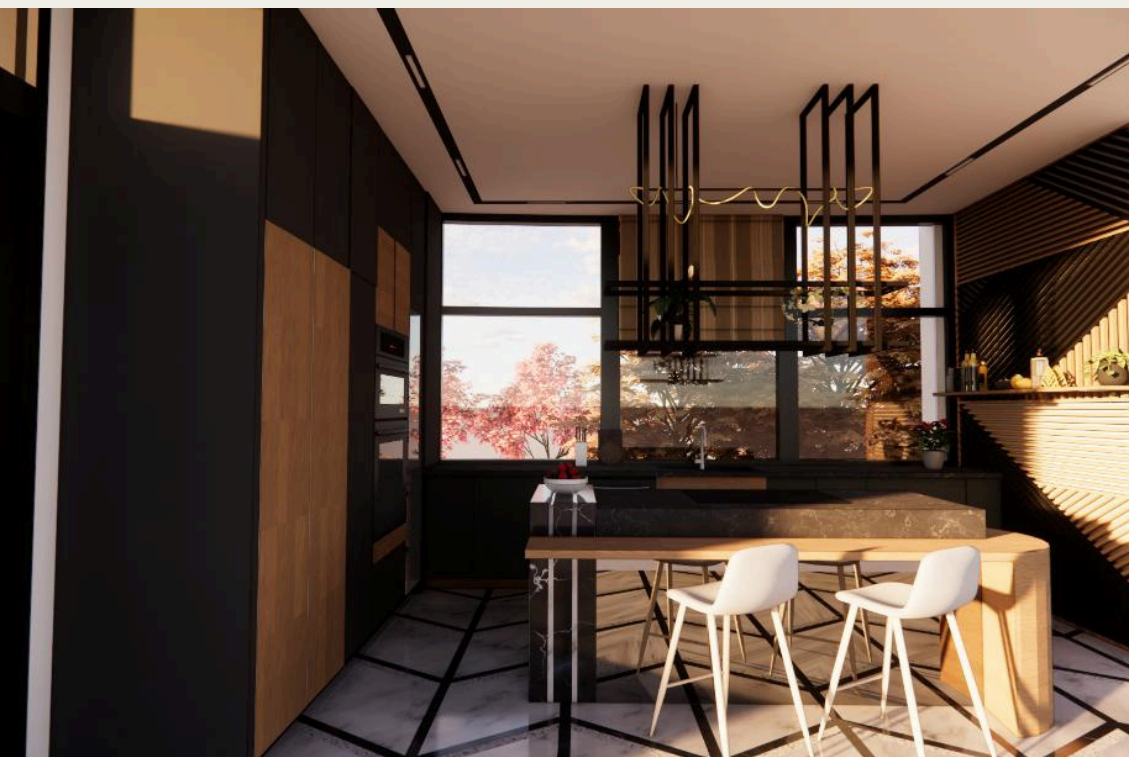
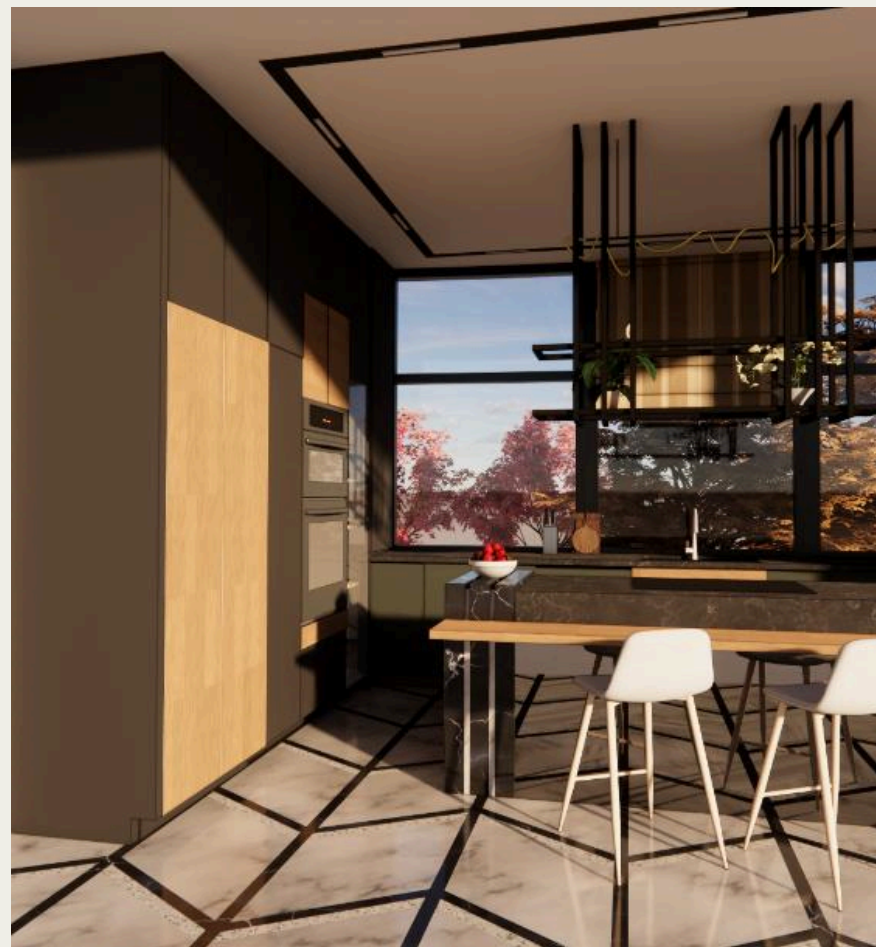
















THANK YOU