

PROJECT INFORMATION

HCC COLEMAN BIOTECHNOLOGY INNOVATION CENTER
1919 PRESSLER ST.
HOUSTON, TX, 77030

DESIGNER INFORMATION

QUAD SOLUTIONS STUDIO
ALHAN VAZQUEZ,
CHANDRIKA DURAN,
EMELY MONTOYA,
HALEH MIRDAMADI

DIRECTORY OF SHEETS

- CS.1 - COVER SHEET

ID1.1 - PARTITION PLAN

ID2.1 - REFLECTED CEILING PLAN

ID3.1 - POWER/ COMMUNICATION PLAN

ID4.1 - FINISH PLAN

ID5.1 - FURNITURE PLAN

ID6.1 - RECEPTION/ BAFFLE ELEVATIONS

ID6.2 -STUDY HUB ENTRANCE ELEVATION

ID6.3 - LAB/ POD ELEVATIONS

ID6.4 - ADA PODS/ LECTURE ELEVATIONS
- ID7.1 -LOCKER/ STUDY HUB SECTIONS

ID7.2 -LECTURE ROOM SECTIONS

ID7.3 -POD SECTION DETAILS

ID8.1 -CONCEPT RENDERS



DIRECTORY OF SYMBOLS

- ELEVATION CALL OUT
- NORTH ARROW
- WALL / CUT
- IDENTIFICATION LABEL
- ENLARGEMENT INDICATOR
- VISIBLE OBJECT LINE
- HIDDEN LINE
- CUTTING PLANE
- DIMENSION LINE
- FINISHES DIRECTION ARROW



PROJECT:
COMMERCIAL COURSE PROJECT
HCC COLEMAN BIOTECHNOLOGY
CENTER

COMMERCIAL DESIGN
INDS 1345

REVISIONS:		
6		
5		
4		
3		
2		
1		

DATE: APR 16TH, 2025

DRAFTED BY:
QUAD SOLUTIONS
STUDIO

SHEET CONTENTS:
COVER SHEET

SHEET:

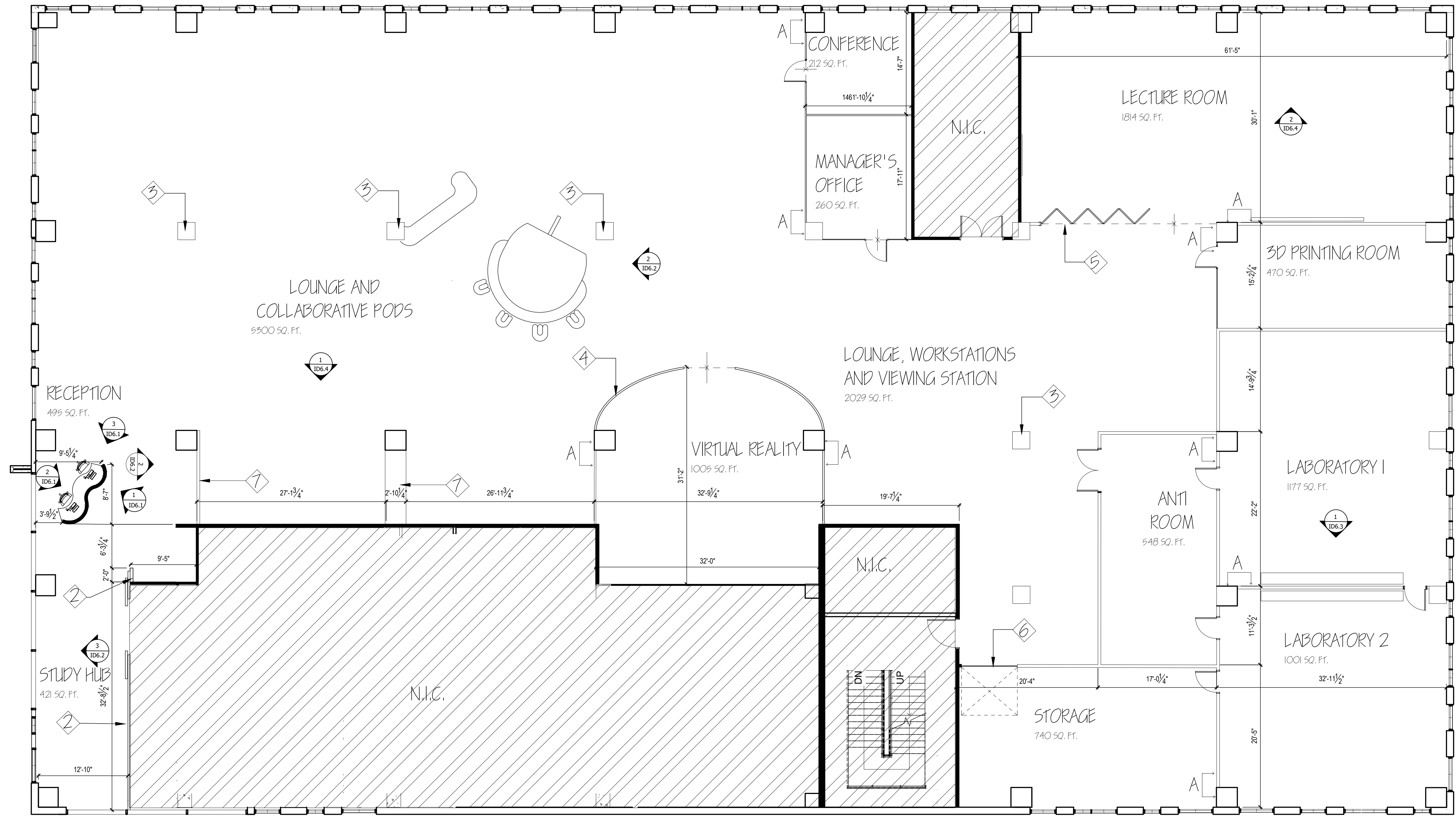
CS-1

GENERAL NOTES

- CEILING HEIGHT IS 13'-7" AT TALLEST LEVEL FROM FLOOR.
- CEILING HEIGHT IS 12'-0" AT SECOND TALLEST LEVEL FROM FLOOR.
- GLASS PARTITION 5 ARE 2-1/8" IN THICKNESS.
- ALL INTERIOR WALL PARTITIONS ARE 5" IN THICKNESS U.N.O.
- REFERENCE INTERIOR FINISH PLAN SHEETS 1D-3 FOR ADDITIONAL FINISH INFORMATION.
- THE SQUARE FOOTAGE OF OPEN SPACES OCCUPIED ARE APPROXIMATED.
- DO NOT SCALE THE DRAWING.

PLAN NOTES

- 1 DEMO EXISTING WALL THIS LOCATION
- 2 NEW GLASS PARTITION REFER TO PLAN
- 3 EXISTING COLUMN/ REMOVE SHEETROCK
- 4 SPECIFY THE RADIOS OF THE CURVE WITH THE DESIGNER
- 5 LECTURE ROOM'S FOLDING DOOR REFER TO PLAN
- 6 8' STORAGE GARAGE DOOR REFER TO PLAN
- 7 NEW WALL PARTITION REFER TO PLAN



1 HCC COLEMAN BIOTECHNOLOGY CENTER 4TH FLOOR PARTITION PLAN
SCALE: 1/8" = 1'-0"



PROJECT:
COMMERCIAL COURSE PROJECT
HCC COLEMAN BIOTECHNOLOGY
CENTER

COMMERCIAL DESIGN

INDS 1345

REVISIONS:

6		
5		
4		
3		
2		
1		

DATE: APR 16TH, 2025

DRAFTED BY:

QUAD SOLUTIONS
STUDIO

SHEET CONTENTS:

PARTITION PLAN

SHEET:

1D-1



COMMERCIAL COURSE PROJECT
HCC COLEMAN BIOTECHNOLOGY
CENTER

COMMERCIAL DESIGN

INDS 1345

REVISIONS:

6		
5		
4		
3		
2		
1		

DATE: APR 9TH, 2025

DRAFTED BY:

QUAD SOLUTIONS
STUDIO

SHEET CONTENTS:

REFLECTED
CEILING PLAN

SHEET:

102.1

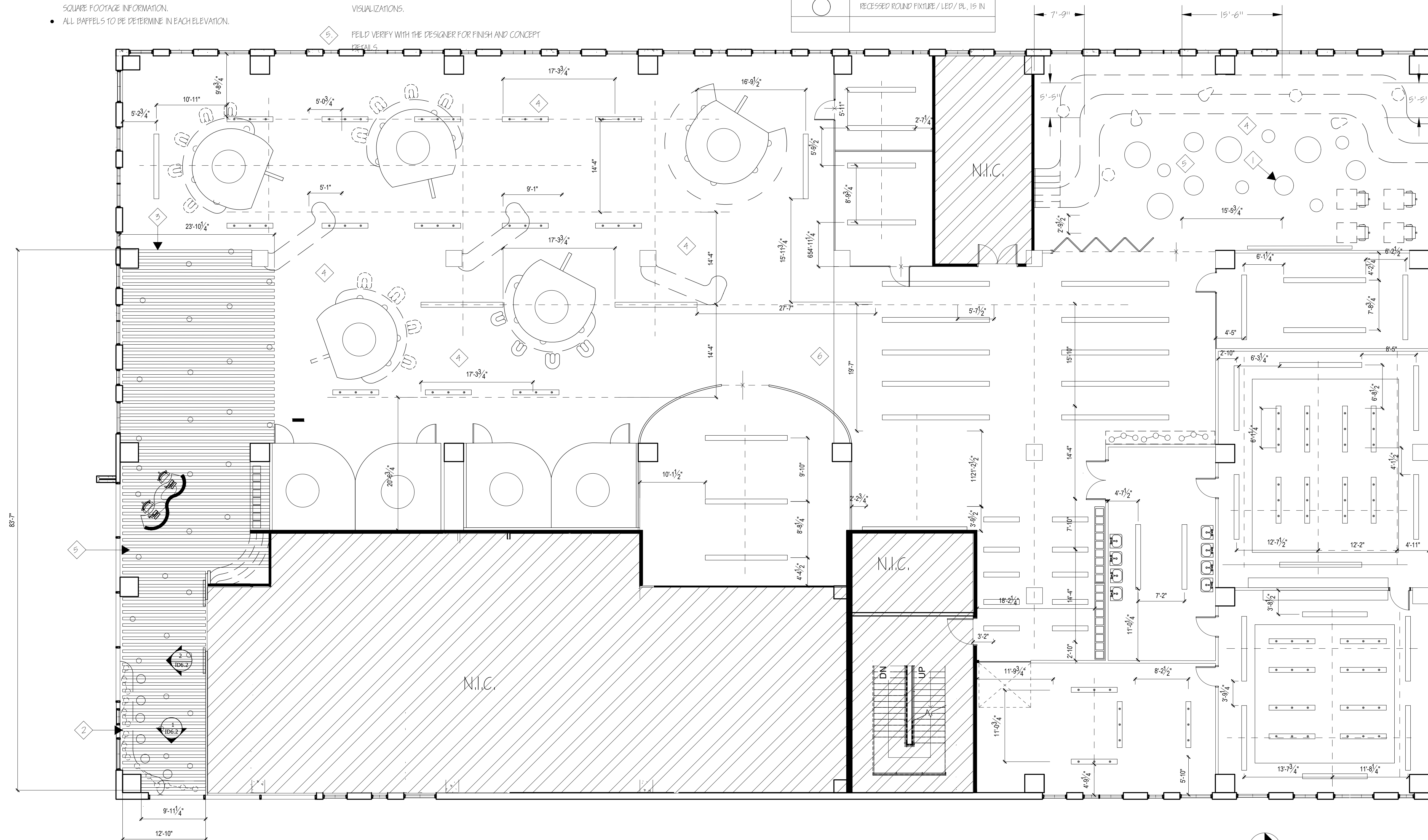
GENERAL NOTES

- REFERENCE DESIGN DEVELOPMENT PRESENTATION FOR FURTHER DETAILS ON LIGHTING FIXTURES.
- REFER TO FURNITURE PLAN SHEET 10-3 FOR FURTHER FURNITURE PLACEMENT INFORMATION.
- REFER TO CONCEPT RENDERINGS SHEET 10-6 FOR FURTHER CEILING BAFFLE DETAILS.
- FOR FURTHER FURNITURE DETAILS REFER TO DESIGN DEVELOPMENT PRESENTATION FOR FURNITURE AND FINISH SELECTIONS IN DETAILED FORMAT.
- REFER TO CONCEPT RENDERINGS SHEET 10-6 FOR FURTHER HVAC DETAILS.
- REFER TO PARTITION PLAN SHEET 10-1 FOR ROOM LABELS AND SQUARE FOOTAGE INFORMATION.
- ALL BAFFLES TO BE DETERMINE IN EACH ELEVATION.

PLAN NOTES

- HANGING LIGHT PENDANT VARY IN DIAMETER BETWEEN 2" TO 5" IN DIAMETER. THEY HANG AT VARYING HEIGHTS BETWEEN 7'-0" AND 9'-0" A.F.F. APPROXIMATELY.
- CEILING ACOUSTIC BAFFLES HANG AT VARYING HEIGHTS BETWEEN 8'-5" AND 10'-2" A.F.F. APPROXIMATELY.
- CEILING ACOUSTIC BAFFLE LENGTHS VARY DEPENDING ON CEILING SURFACE COVERED.
- EXPOSED HVAC LOCATED IN THIS AREA. REFERENCE CONCEPT RENDERINGS SHEET 10-6 FOR FURTHER HVAC VISUALIZATIONS.
- FIELD VERIFY WITH THE DESIGNER FOR FINISH AND CONCEPT DETAILS.
- COVE CEILING FLUSH WITH CONCRETE PILLAR CEILING SUPPORT

LIGHTING LEGEND	
SYMBOL	ITEM
	MARINE-GRADE CORROSION-RESISTANT ALUMINUM BLACK POWDER COAT 4.5" dia PETCAL CO. CUSTOM LENGTH 144 IN LENGTH / 2 IN WIDTH
	WHITE PAPER LAMP SHADE AND DIAMETER: 19.7 / 21.6 / 47.2" D15.7 + D25.6 + D27.6" WIRE LENGTH: 99"
	BLACK ALUMINUM CASTING, L: 48", H: 3.5", W: 2.72"
	CANVAS, IRON, METAL, RED, 1 head Size: Dia / 47.2" x H 31.8"
	WOOD TONE, L780 mm 1580mm H235 mm
	RECESSED ROUND FIXTURE / LED / BL, 15 IN



1 HCC COLEMAN BIOTECHNOLOGY CENTER 4TH FLOOR REFLECTED CEILING PLAN
SCALE: 1/8" = 1'-0"

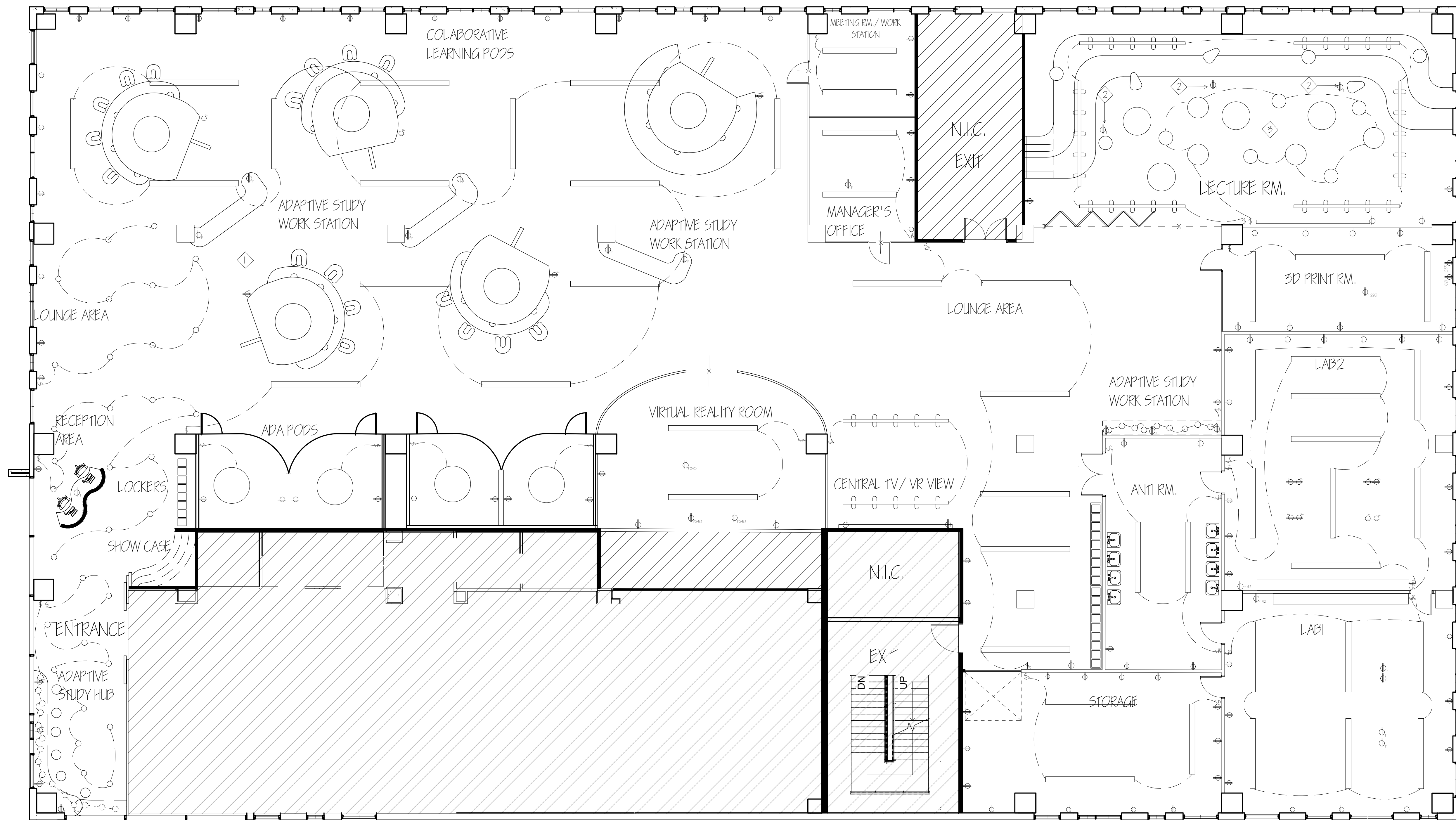
GENERAL NOTES

- ALL WORK MUST COMPLY WITH THE LATEST NATIONAL ELECTRICAL CODE (NEC)
- STANDARD AND LOCAL BUILDING CODES.
- REQUIRED PERMITS AND INSPECTIONS MUST BE OBTAINED BEFORE STARTING ELECTRICAL WORK.
- ENSURE POWER REQUIREMENTS FOR ALL SMART HOME DEVICES ARE MET (E.G., SMART THERMOSTATS, CAMERAS, LIGHTING).
- ALL OUTLETS TO BE 15" A.F. U.N.O.
- PLACE LIGHT SWITCHES AT ACCESSIBLE HEIGHTS AND LOCATIONS NEAR ROOM ENTRANCES.
- THE HEIGHT OF ALL PENDENT LIGHTS A.F.F. SHOULD BE DETERMINED UPON BY DESIGNER ON DAY OF INSTALLATION.

PLAN NOTES

- + SYMBOL / TO BE DETERMINED BY POP MANUFACTURED CERTIFIED ELECTRICIAN.
- + BLEACHERS OUTLET/ TO BE DETERMINED BY MANUFACTURER.
- THE HEIGHT OF ALL PENDANTS IN LECTURE ROOM TO BE DETERMINED BY INSTALLER / DESIGNER / UPON INSTALLATION.

LIGHTING LEGEND	
SYMBOL	ITEM
	MARINE-GRADE CORROSION-RESISTANT ALUMINUM BLACK POWDER COAT 4.5" dia POTENTIAL: CUSTOM LENGTH 1/4" IN LENGTH / 2" IN WIDTH
	WHITE PAPER LAMP SHADE AND DIAMETER: 19.7" / 27.6" / 47.2" DIS. 7" / 23.6" / 27.6" WIRE LENGTH: 59"
	BLACK ALUMINUM CASTING, L: 48", H: 3.5", W: 2.72"
	CANVAS, IRON, METAL, RED, 1 Head Size: Dia / 47.2" x H 31.5"
	WOOD TONE, L: 780 mm 1580 mm H: 255 mm
	RECESSED ROUND FIXTURE / LED / BL, 15 IN



1 POWER/COMMUNICATION PLAN
Scale: 1/8"=0=1'-0"



PROJECT:
COMMERCIAL COURSE PROJECT
HCC COLEMAN BIOTECHNOLOGY
CENTER

COMMERCIAL DESIGN
INDS 1345

REVISIONS:		
6		
5		
4		
3		
2		
1		

DATE: APR 16TH, 2025

DRAFTED BY:

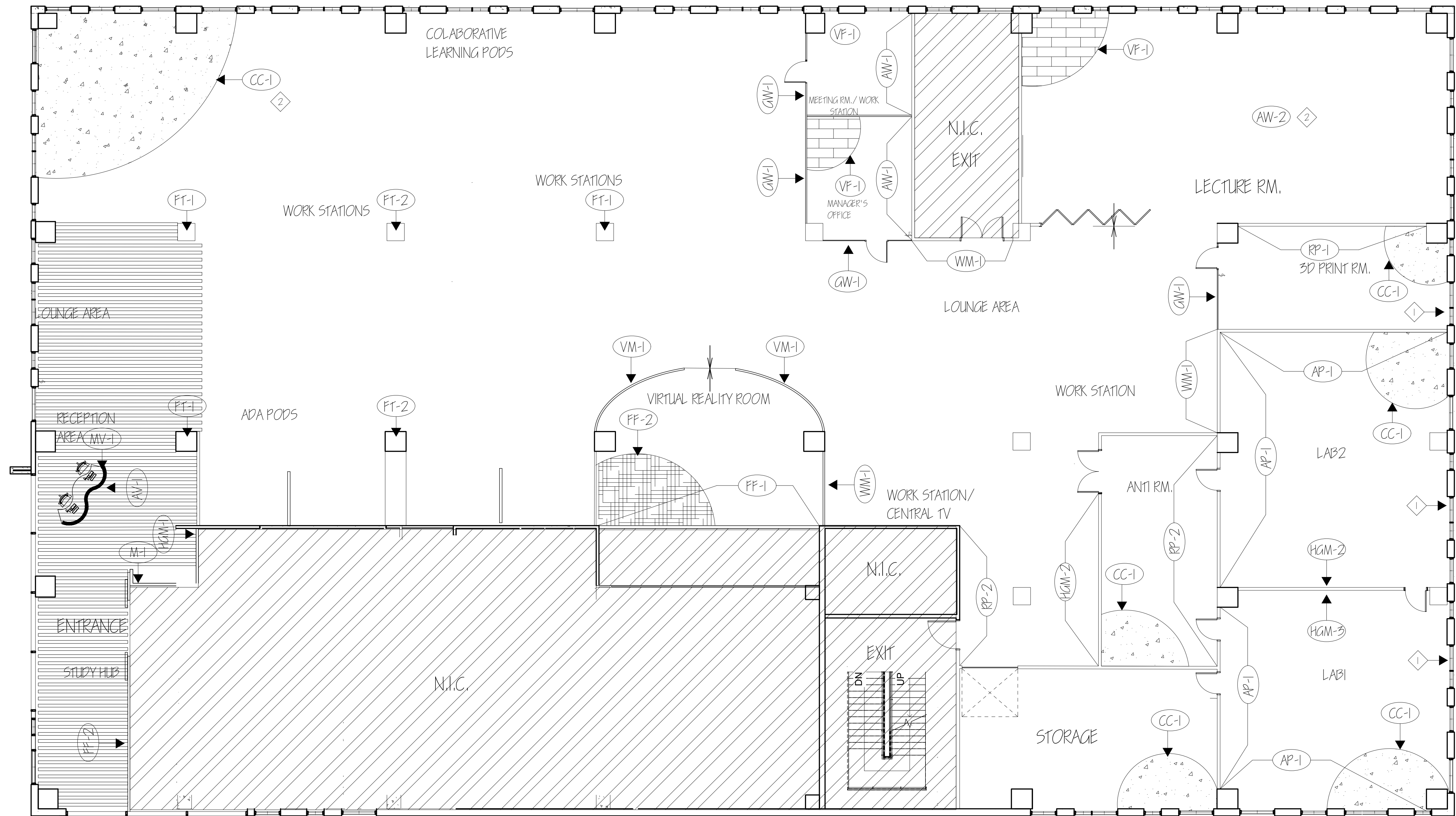
QUAD SOLUTIONS
STUDIO

SHEET CONTENTS:

POWER/
COMMUNICATION
PLAN

SHEET:

103.1



GENERAL NOTES

- ALL FLOORS TO BE KEPT AS CC-1, U.N.O.
- REFERENCE DESIGN DEVELOPMENT PRESENTATION FOR ADDITIONAL FINISH INFORMATION.
- REFERENCE SHEET ID-6 FOR FINISH DETAILS AND VISUAL REPRESENTATION.
- ALL FLOORING TRANSITIONS THAT OCCUR AT DOORWAY SHALL BE CENTERED UNDER THE DOOR IN ITS CLOSED POSITION.
- THE HVAC PAINT COLOR IS SPECIFIED UNDER DESIGNATIONS PT-1 AND PT-2
- WALL MOUNTED COLLABORATE COUNTER FINISH IS SPECIFIED UNDER DESIGNATION A-1
- ACCENT CEILING PANELS FINISH IS SPECIFIED UNDER DESIGNATION AAA-1
- ALL WALLS WILL BE BP-1 U.N.O
- LECTURE DETAILS ARE ON ID2.1

PLAN NOTES

- ALL WALLS ON THE WINDOW SIDE SHALL REMAIN CONCRETE U.N.O.
- THE SPECIFIED WALL FINISH WILL BE APPLIED TO ALL WALLS WITHIN THIS ROOM U.N.O.
- THE SPECIFIED FLOOR FINISH SHALL REMAIN CONSISTENT ACROSS THIS FLOOR AREA U.N.O.

1 HCC COLEMAN BIOTECHNOLOGY CENTER 4TH FLOOR FINISH PLAN
SCALE: 3/8" = 1'-0"

MATERIAL FINISH SCHEDULE					
KEY	ITEM	MANUFACTURER	MATERIAL / COLOR	SIZE	REMARKS
CC-1	NATURAL CONCRETE	N/A (EXISTING STRUCTURE)	N/A / NATURAL GRAY	VARIES	EXISTING CONCRETE STRUCTURE
VF-1	LUXURY VINYL PLANK FLOORING	TILE BAR	OPTORO AMUR MAPLE MONTICELLO	6" X 48"	WATERPROOF, DURABLE AND FLOOR SCORE CERTIFIED
FF-2	FRASTER FELT RUG	UNIKA VAEV	100% WOOL FELT DARK GRAY	CUSTOM FIT	ECO-FRIENDLY AND SLIP-RESISTANCE
AW-1	ACOUSTIC WALLING	SLALOM	PET FELT GREY GREEN 22	22" X THK 2"	
AW-2	ACOUSTIC WALLING	SLALOM	ATMOSPHERE ADAPTIVE ANALOG 3D	N/A	
WM-1	WALLPAPER MURAL	WALLISM	CONNECTED CITYSCAPE WALLPAPER	CUSTOM FIT	
AP-1	ACOUSTIC PANEL	SLALOM	96% RECYCLED PLASTIC	28IN W X 118 IN H	
HGM-1	HIGH GLASS MILLWORK	FLORENSE	HDP / DEEP GREEN	CUSTOM FIT	
HGM-2	HIGH GLASS MILLWORK	FLORENSE	HDP / PIRANGA	CUSTOM FIT	
HGM-3	HIGH GLASS MILLWORK	FLORENSE	HDP / BURGUNDY	CUSTOM FIT	
PT-1	PAINT	BENJAMIN MOORE	PAINT FOR METAL / POOL SIDE	N/A	
PT-2	PAINT	BENJAMIN MOORE	PAINT FOR METAL / CHROME GREEN	N/A	
AAA-1	ATMOSPHERE ADAPTIVE ANALOG 3D	ARKSTURA	POWER COATED STEEL, SOFT SOUND MATERIAL	3" THICK RANGE 9" TO 9" HEIGHT	
AV-1	AFORMOSIA VENEER	FORM WOODS INDUSTRY	PERICOPSIS ELIATA/ EBONY SHADE	QUARTER CUT	

MV-1	MSI VENTARA	CARTON	PORCELAIN/ MARBLE	48" X 48"	
VM-1	VITRUM MULTITOUCH SYSTEM	DAVINCI TECNOLOGIA	GLASS	CUSTOM FIT	
GW-1	GLASS WORK	DYNAMICHIVE	TAMPERED GLASS	CUSTOM FIT	
FT-1	FELT TILE	UNIKA VAEV	FACE: 100% WOOL FELT BACK: 100% POLYESTER FELT	9 SHAPES/ 7/16" THICK - CUSTOM DIMENSIONS	
FT-2	FELT TILE	UNIKA VAEV	FACE: 100% WOOL FELT BACK: 100% POLYESTER FELT	9 SHAPES/ 7/16" THICK - CUSTOM DIMENSIONS	
RP-1	RADIUS PANEL	UNIKA VAEV	YOS42 TEXTURES - SUGAR COOKIE	CUSTOM FIT	OFFERING SOUND ABSORPTION AND DECORATIVE APPEAL
RP-2	RADIUS PANEL	UNIKA VAEV	YOS89 OPTICAL SOLIDS - PRICKLY PEAR	CUSTOM FIT	OFFERING SOUND ABSORPTION AND DECORATIVE APPEAL
FF-1	FRASTER FELT WALL COVERING	UNIKA VAEV	100% WOOL FELT 540 OCEAN	CUSTOM FIT	ECO-FRIENDLY AND SLIP-RESISTANCE
A-1	ARALDICA	LA CASA CON TINIA	PORCELAIN STONEWARE	DIFFERENT SIZES	
CF-1	COMMERCIAL FLOORING	VQ INCORPORATED	NON-WOVEN/ ROYAL BLUE	6'7" OR 13'2"	
CF-2	COMMERCIAL FLOORING	VQ INCORPORATED	NON-WOVEN/ AZURA	6'7" OR 13'2"	
CF-3	COMMERCIAL FLOORING	VQ INCORPORATED	NON-WOVEN/ SKY BLUE	6'7" OR 13'2"	
BP-1	FALX USED BRICK PANEL	LIFESTONE BRICK VENEER SIDING	BRICK/ OLD TOWN	24" X 46-3/8"	



PROJECT:
COMMERCIAL COURSE PROJECT
HCC COLEMAN BIOTECHNOLOGY
CENTER

COMMERCIAL DESIGN

INDS 1345

REVISIONS:

6		
5		
4		
3		
2		
1		

DATE: APR 16TH, 2025

DRAFTED BY:

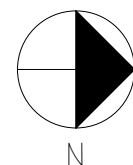
QUAD SOLUTIONS
STUDIO

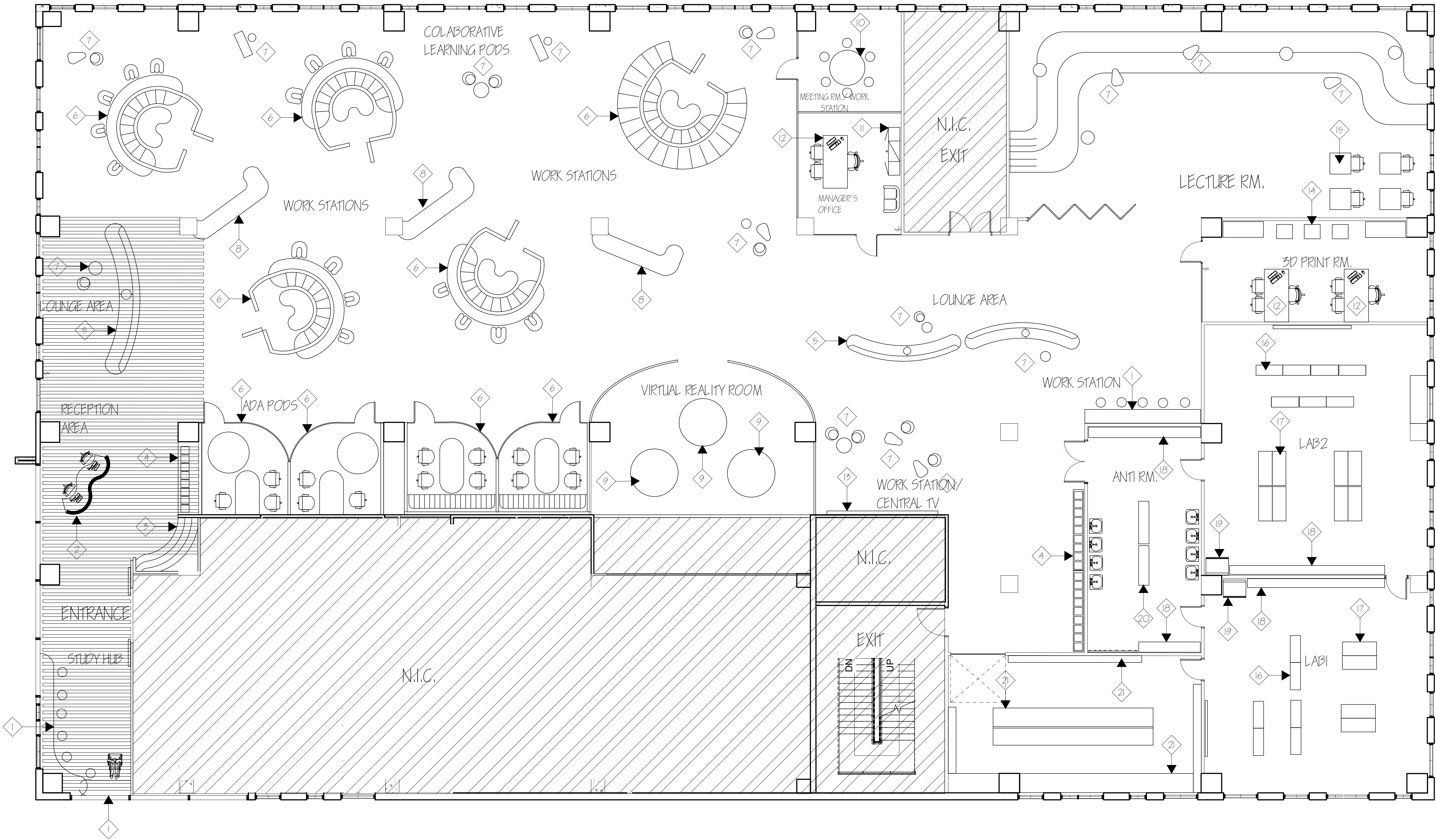
SHEET CONTENTS:

FINISH PLAN
AND FINISH
SCHEDULE

SHEET:

ID4.1





GENERAL NOTES

- FOR FURNITURE PLACEMENT REFERENCE ONLY.
- BUILT-IN FLOATING COUNTERTOPS WITH A COUNTER HEIGHT OF 3'-6" FROM THE FLOOR U.N.O.
- LOUNGE BUILT-IN COUNTER HAS AN ADA PART SET AT 3'-0" FROM THE FLOOR.
- REFERENCE INTERIOR FINISH PLAN SHEETS 1D-3 FOR ADDITIONAL FINISH INFORMATION.
- THE SQUARE FOOTAGE OF OPEN SPACES OCCUPIED ARE APPROXIMATED.
- DO NOT SCALE THE DRAWING.
- FOR FURTHER FURNITURE DETAILS REFER TO DESIGN DEVELOPMENT PRESENTATION FOR FURNITURE AND FINISH SELECTIONS IN DETAILED FORMAT.



PROJECT:
COMMERCIAL COURSE PROJECT
HCC COLEMAN BIOTECHNOLOGY
CENTER

COMMERCIAL DESIGN

INDS 1345

REVISIONS:

6		
5		
4		
3		
2		
1		

DATE: APR 9TH, 2025

DRAFTED BY:

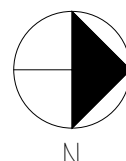
QUAD SOLUTIONS
STUDIO

SHEET CONTENTS:

FURNITURE
PLAN

SHEET:

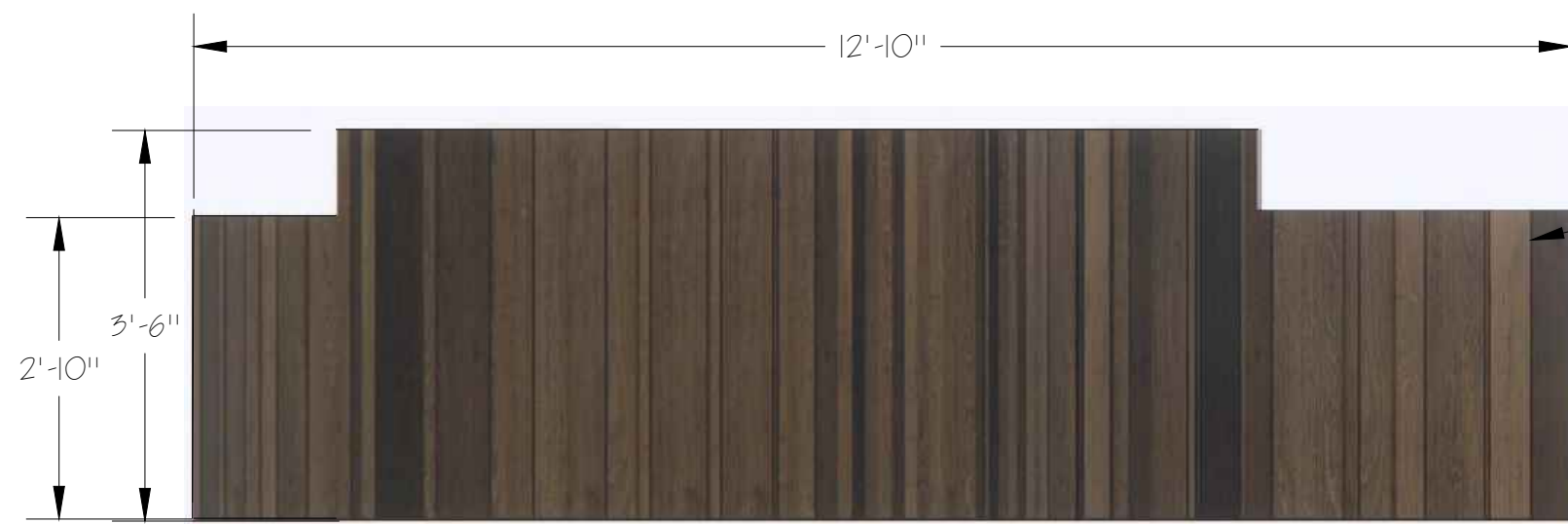
1D5.1



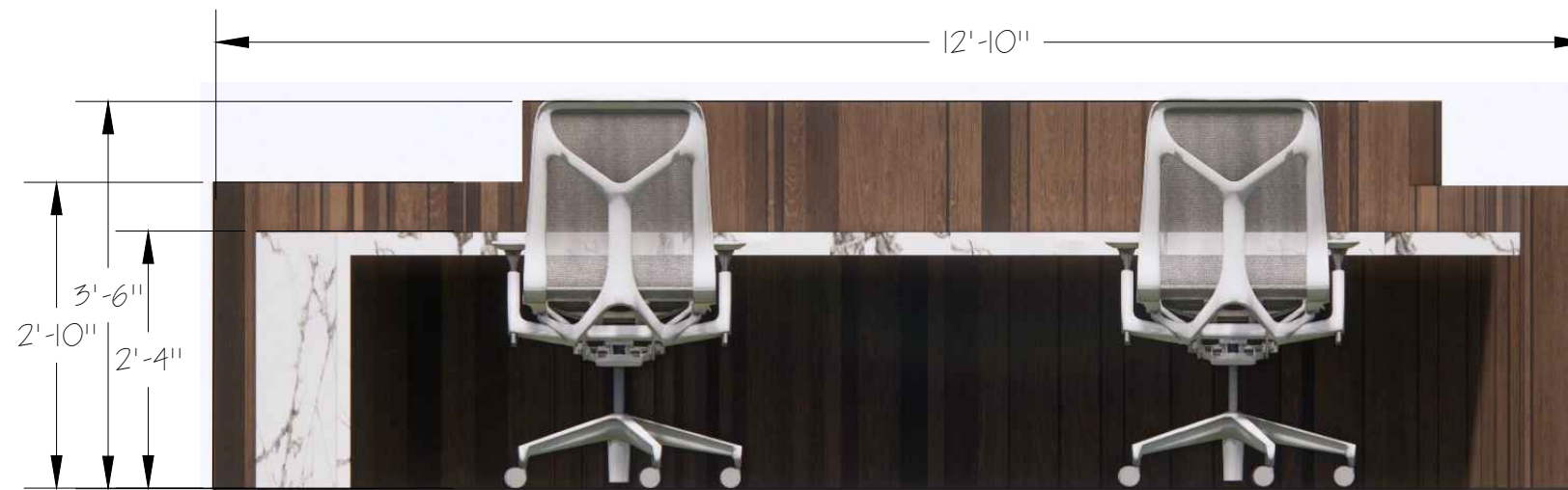
1 FURNITURE PLAN
SCALE: 1/8" = 1'-0"

MATERIAL FINISH SCHEDULE					
KEY	ITEM	QTY	MANUFACTURER	LOCATION	DIMENSIONS
1	FLOATING COUNTER	2	CREATIVE STYLE FURNITURE	LOUNGE	CUSTOM FIT
2	RECEPTION DESK AND CHAIR	1	DESK: CREATIVE STYLE FURNITURE CHAIR: HERMAN MILLER	RECEPTION	DESK: CUSTOM FIT CHAIR: 38.9" X 45.5" X W 26.7" - 29.5" X D 26.7"
3	BUILT-IN WALL DISPLAY	1	CREATIVE STYLE FURNITURE	RECEPTION	CUSTOM FIT
4	BUILT-IN LOCKERS	2	FLORENSE	LOUNGE	CUSTOM FIT
5	CURVED SECTIONAL SEATING	3	VISSO	LOUNGE	SINGLE SEGMENT SIZE: 11.81" W X 35.43" D X 28.74" H X 15.74" SH
6	COLLABORATIVE POD	9	CREATIVE STYLE FURNITURE	LOUNGE	CUSTOM FIT
7	LOUNGE SEATING AND TABLES	14	TABLES: CREATIVE STYLE FURNITURE CHAIRS: ALL MODERN / ISTEDIS / BAXTER	ALL LOUNGE AREAS	VARIES
8	COLLABORATIVE STATION	3	CREATIVE STYLE FURNITURE	LOUNGE	CUSTOM FIT
9	VIRTUAL REALITY TREADMILLS	3	KAT VR	VR ROOM	49.2" L X 49.2" W 62.4" H
10	CONFERENCE DESK AND CHAIRS	11 / 6C	TABLES: CREATIVE STYLE FURNITURE CHAIRS: ALL MODERN	MEETING RM.	TABLE: CUSTOM FIT CHAIR: 30.5" H X 24" W X 24" D

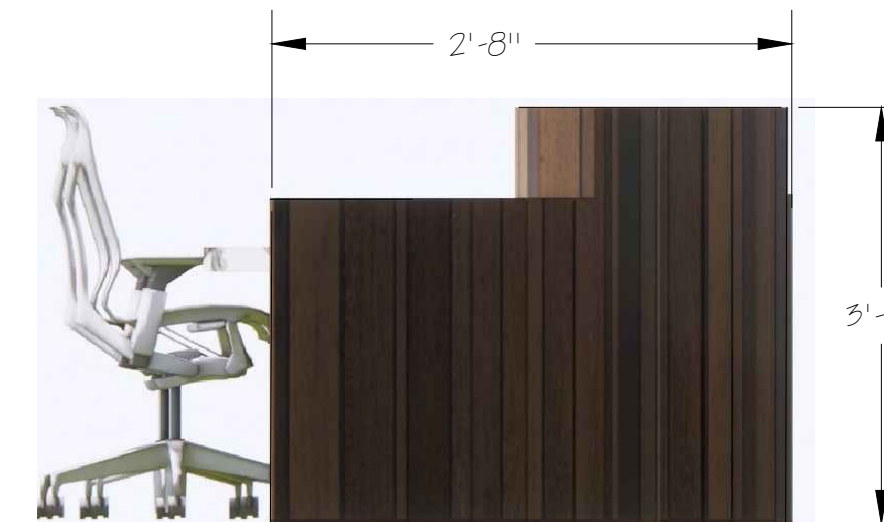
11	STORAGE	1	WEST ELM	MANAGER OFFICE	N/A
12	DESK AND CHAIR	3D / 9C	BENJAMIN MOORE		N/A
13	BUILT-IN TV WALL	1	ARKTURA		3" THICK RANGE 9" TO 9" HEIGHT
14	3D PRINTERS AND DESKS	3P / 2D	FORM WOODS INDUSTRY		QUARTER CUT
15	INDIVIDUAL DESK AND CHAIR	4	CARTON	PORCELAIN / MARBLE	48" X 48"
16	LAB STANDING DESK	13	DAVINCI TECHNOLOGIA	GLASS	CUSTOM FIT
17	LAB STATION DESK	12	DYNAMICHIVE	TAMPERED GLASS	CUSTOM FIT
18	BUILT-IN SHELVING	4	UNIKA VAEV		9 SHAPES / 7 / 16" THICK - CUSTOM DIMENSIONS
19	LAB REFRIGERATOR	2	UNIKA VAEV		9 SHAPES / 7 / 16" THICK - CUSTOM DIMENSIONS
20	BENCH SEATING	2	UNIKA VAEV	YOB42 TEXTURES - SUGAR COOKIE	CUSTOM FIT
21	STORAGE SHELVING	4	UNIKA VAEV	YOB59 OPTICAL SOLIDS - PRICKLY PEAR	CUSTOM FIT



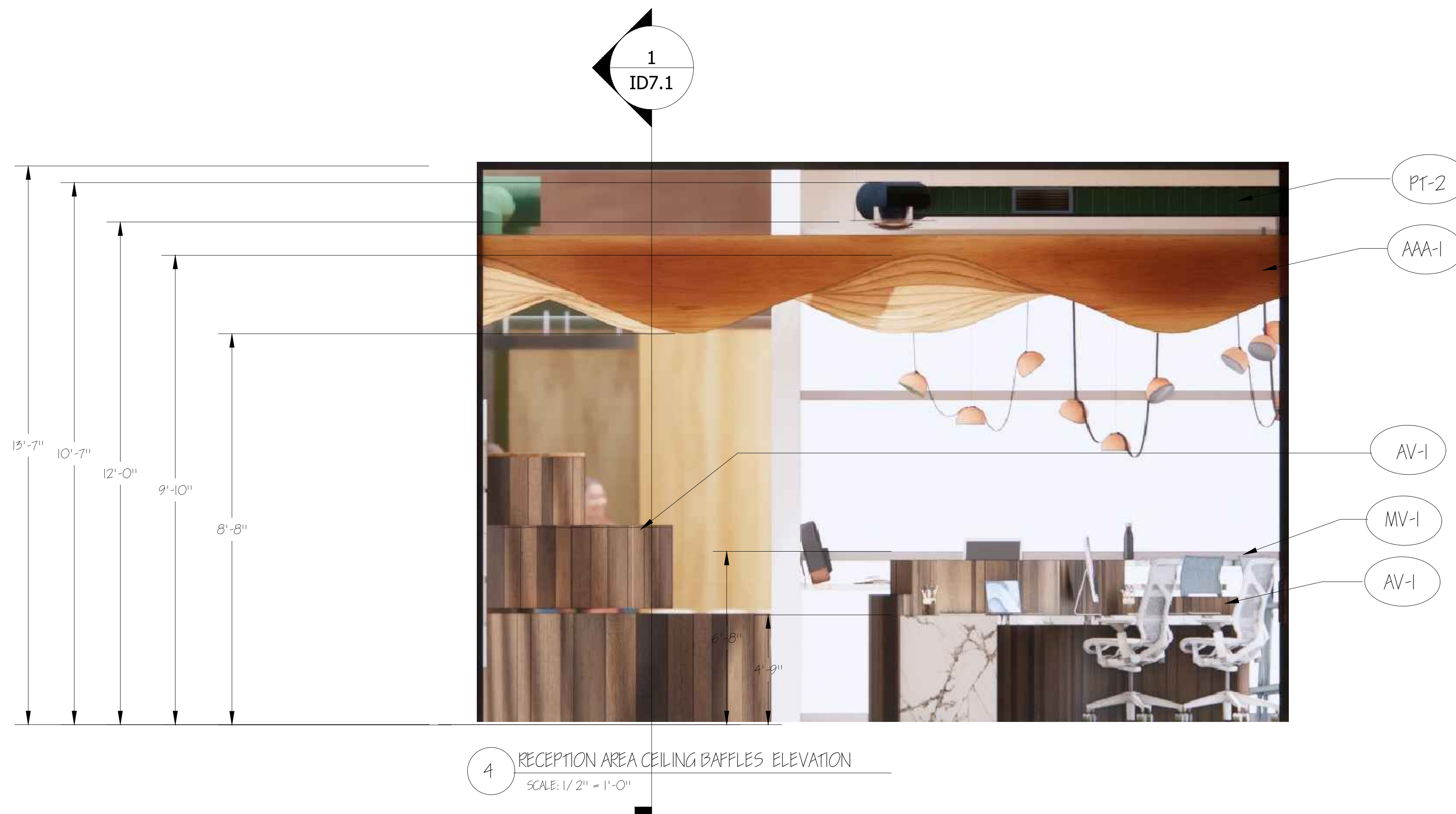
1 RECEPTION DESK FRONT ELEVATION
SCALE: 1/2" = 1'-0"



2 RECEPTION DESK BACK ELEVATION
SCALE: 1/2" = 1'-0"



3 RECEPTION DESK SIDE ELEVATION
SCALE: 1/2" = 1'-0"



4 RECEPTION AREA CEILING BAFFLES ELEVATION
SCALE: 1/2" = 1'-0"

GENERAL NOTES

- ELEVATIONS ARE FOR CONCEPT PURPOSES ONLY.
- REFER TO FURNITURE PLAN SHEET ID-3 FOR FURTHER FURNITURE PLACEMENT INFORMATION.
- REFER TO CONCEPT RENDERINGS SHEET ID-6 FOR FURTHER CEILING BAFFLE DETAILS.
- FOR FURTHER FURNITURE AND FINISH INFORMATION REFER TO DESIGN DEVELOPMENT PRESENTATION.
- DO NOT SCALE THE DRAWING.



PROJECT:
COMMERCIAL COURSE PROJECT
HCC COLEMAN BIOTECHNOLOGY
CENTER

COMMERCIAL DESIGN

INDS 1345

REVISIONS:

6		
5		
4		
3		
2		
1		

DATE: APR 16TH, 2025

DRAFTED BY:

QUAD SOLUTIONS
STUDIO

SHEET CONTENTS:

RECEPTION
ELEVATIONS

SHEET:

ID6.1



PROJECT:
COMMERCIAL COURSE PROJECT
HCC COLEMAN BIOTECHNOLOGY
CENTER

COMMERCIAL DESIGN

INDS 1345

REVISIONS:

6		
5		
4		
3		
2		
1		

DATE: APR 16TH, 2025

DRAFTED BY:

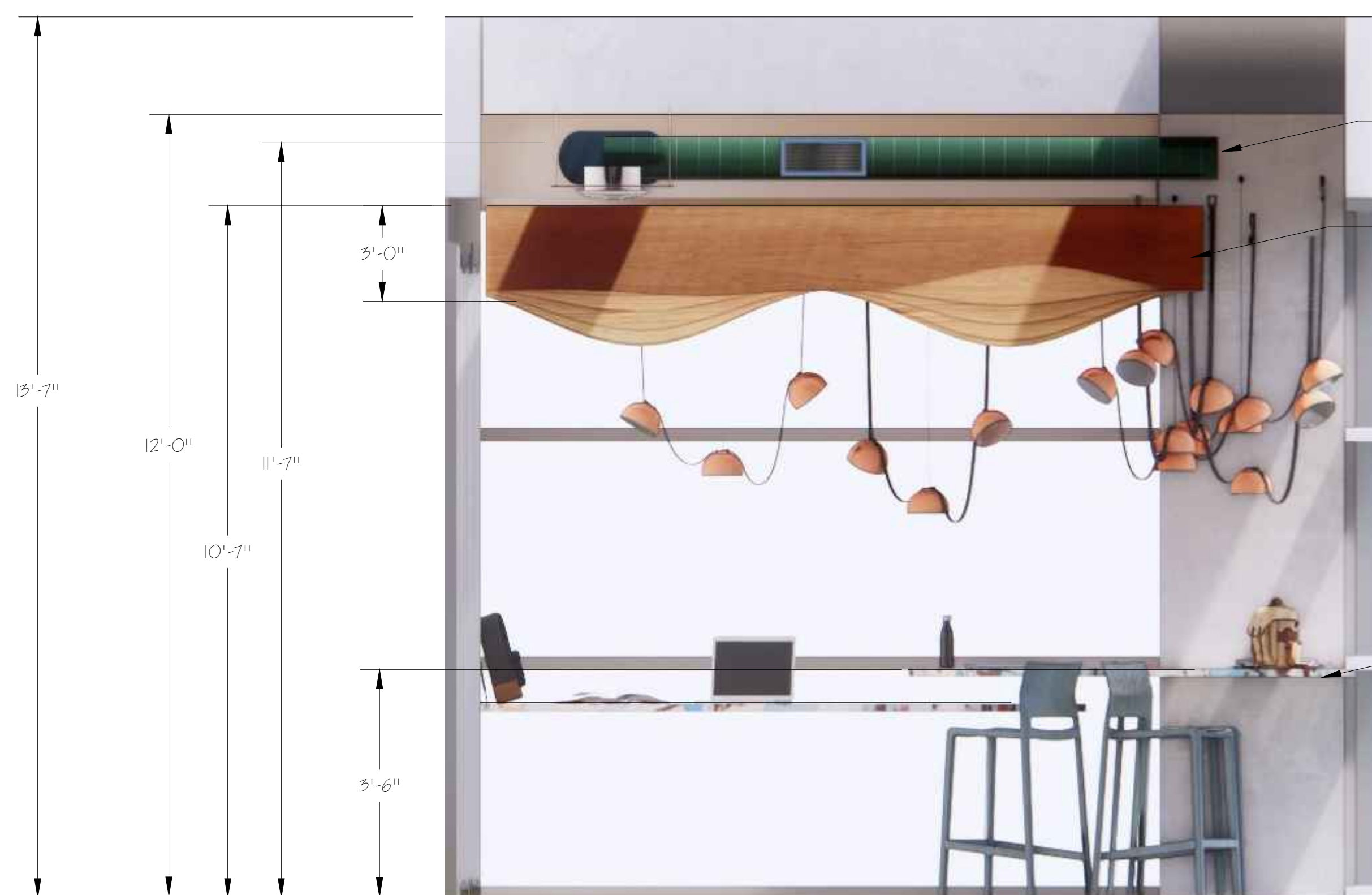
QUAD SOLUTIONS
STUDIO

SHEET CONTENTS:

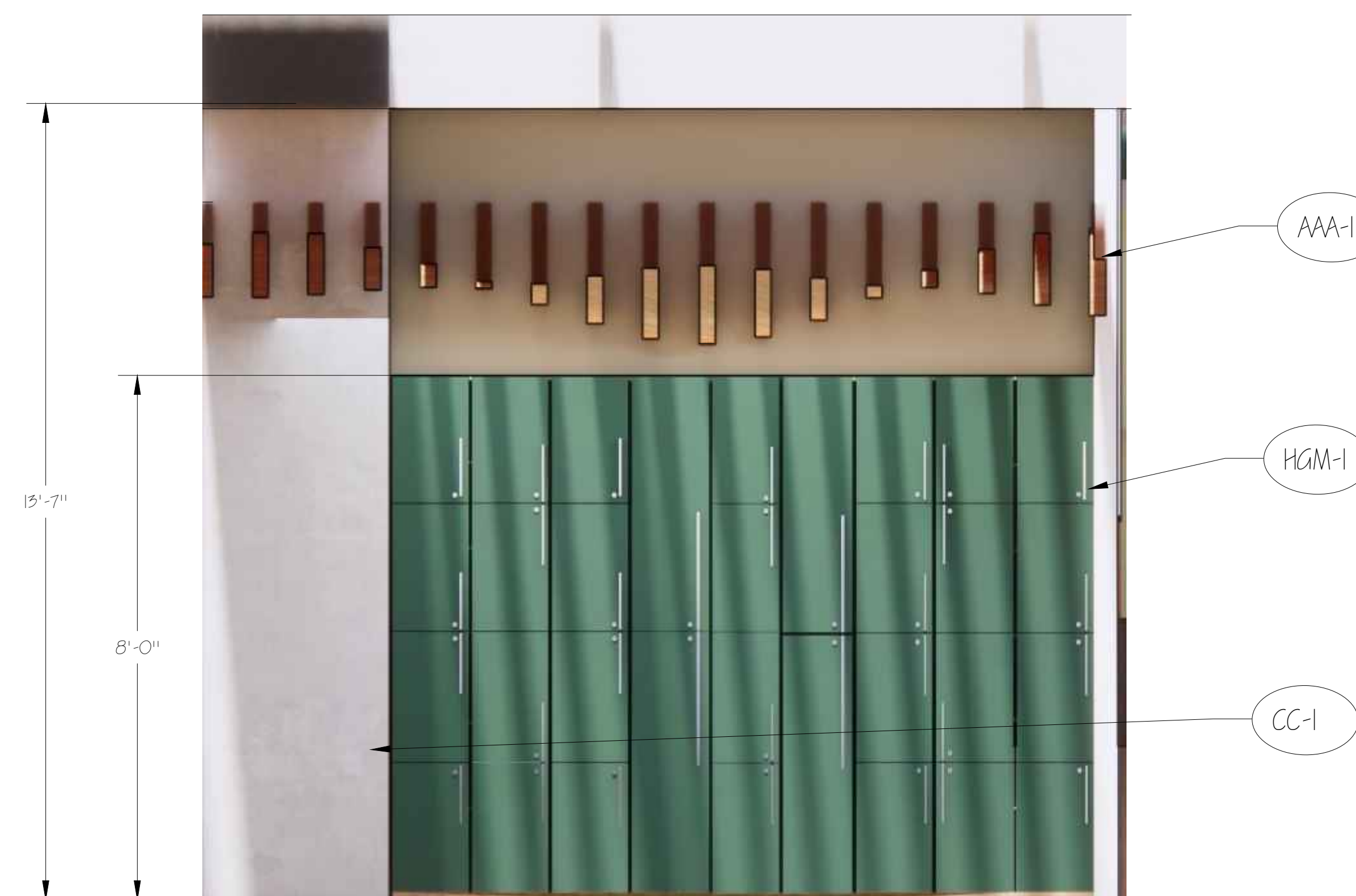
STUDY HUB /
LOCKER
ENTRANCE
ELEVATION

SHEET:

ID6.2



1 STUDY HUB ENTRANCE SECTION ELEVATION
SCALE: 1/2" = 1'-0"



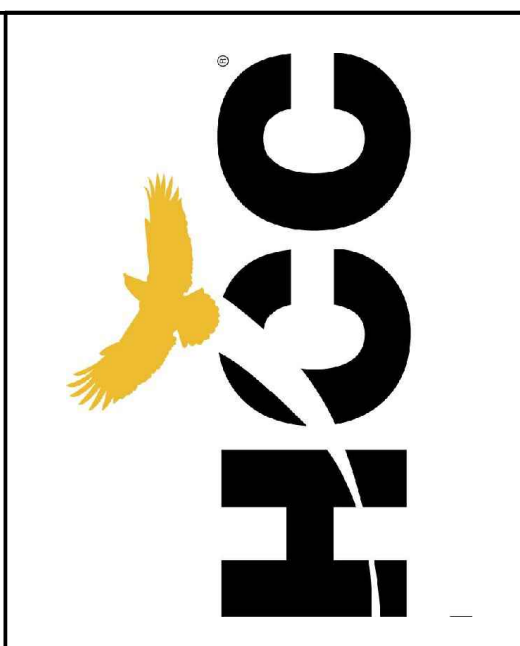
2 LOCKER ELEVATION
SCALE: 1/2" = 1'-0"



3 STUDY HUB ENTRANCE SECTION ELEVATION
SCALE: 1/2" = 1'-0"

GENERAL NOTES

- ELEVATIONS ARE FOR CONCEPT PURPOSES ONLY.
- REFER TO FURNITURE PLAN SHEET ID-3 FOR FURTHER FURNITURE PLACEMENT INFORMATION.
- REFER TO CONCEPT RENDERINGS SHEET ID-6 FOR FURTHER CEILING BAFFLE DETAILS.
- FOR FURTHER FURNITURE AND FINISH INFORMATION REFER TO DESIGN DEVELOPMENT PRESENTATION.
- DO NOT SCALE THE DRAWING.



PROJECT:
COMMERCIAL COURSE PROJECT
HCC COLEMAN BIOTECHNOLOGY
CENTER

COMMERCIAL DESIGN

INDS 1345

REVISIONS:

6		
5		
4		
3		
2		
1		

DATE: APR 16TH, 2025

DRAFTED BY:

QUAD SOLUTIONS
STUDIO

SHEET CONTENTS:

LAB / POD
ELEVATIONS

SHEET:

ID6-3



1 LAB MILLWORK ELEVATION
SCALE: 1/2" = 1'-0"

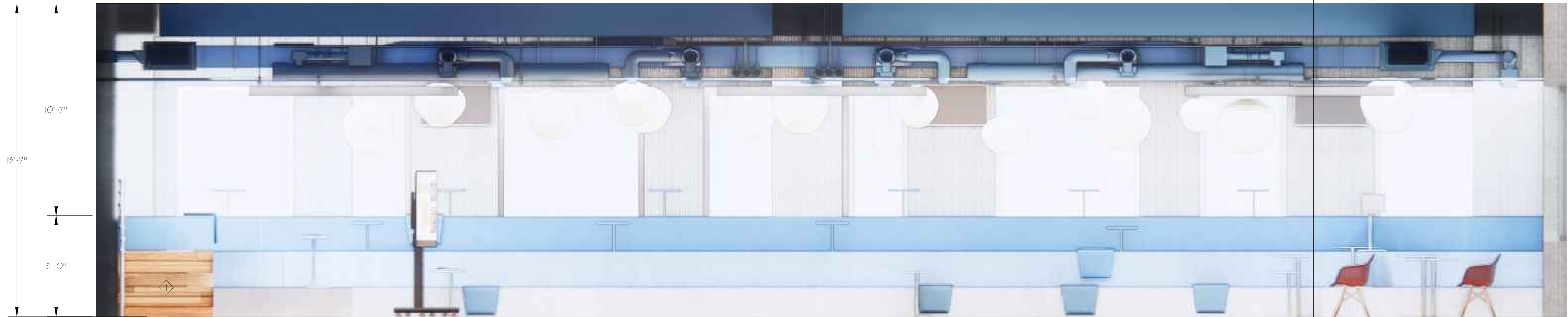
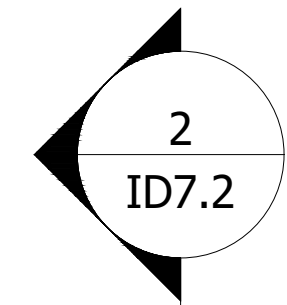


2 COLLABORATIVE PODS SECTION ELEVATION
SCALE: 1/2" = 1'-0"

- GENERAL NOTES
- ELEVATIONS ARE FOR CONCEPT PURPOSES ONLY.
 - REFER TO FURNITURE PLAN SHEET ID-3 FOR FURTHER FURNITURE PLACEMENT INFORMATION.
 - REFER TO CONCEPT RENDERINGS SHEET ID-6 FOR FURTHER CEILING BAFFLE DETAILS.
 - FOR FURTHER FURNITURE AND FINISH INFORMATION REFER TO DESIGN DEVELOPMENT PRESENTATION.
 - DO NOT SCALE THE DRAWING.



1 STATIONARY ADA PODS ELEVATION
SCALE: $\frac{3}{8}" = 1'-0"$



2 LECTURE ROOM FRONT ELEVATION
SCALE: $\frac{3}{8}" = 1'-0"$

GENERAL NOTES

- ELEVATIONS ARE FOR CONCEPT PURPOSES ONLY.
- REFER TO FURNITURE PLAN SHEET ID-3 FOR FURTHER FURNITURE PLACEMENT INFORMATION.
- REFER TO CONCEPT RENDERINGS SHEET ID-6 FOR FURTHER CEILING BAFFLE DETAILS.
- FOR FURTHER FURNITURE AND FINISH INFORMATION REFER TO DESIGN DEVELOPMENT PRESENTATION.
- DO NOT SCALE THE DRAWING.
- ALL FINISHES MENTIONED IN SHEET ID6-3

PLAN NOTES

- ◊ 6 STEPS FOR BLEACHERS REFER TO PLAN



PROJECT:
COMMERCIAL COURSE PROJECT
HCC COLEMAN BIOTECHNOLOGY
CENTER

COMMERCIAL DESIGN

INDS 1345

REVISIONS:

6		
5		
4		
3		
2		
1		

DATE: APR 16TH, 2025

DRAFTED BY:

QUAD SOLUTIONS
STUDIO

SHEET CONTENTS:

ADA PODS/
LECTURE
ELEVATIONS

SHEET:

ID6-4



PROJECT:
COMMERCIAL COURSE PROJECT
HCC COLEMAN BIOTECHNOLOGY
CENTER

COMMERCIAL DESIGN
INDS 1345

REVISIONS:

6		
5		
4		
3		
2		
1		

DATE: APR 16TH, 2025

DRAFTED BY:

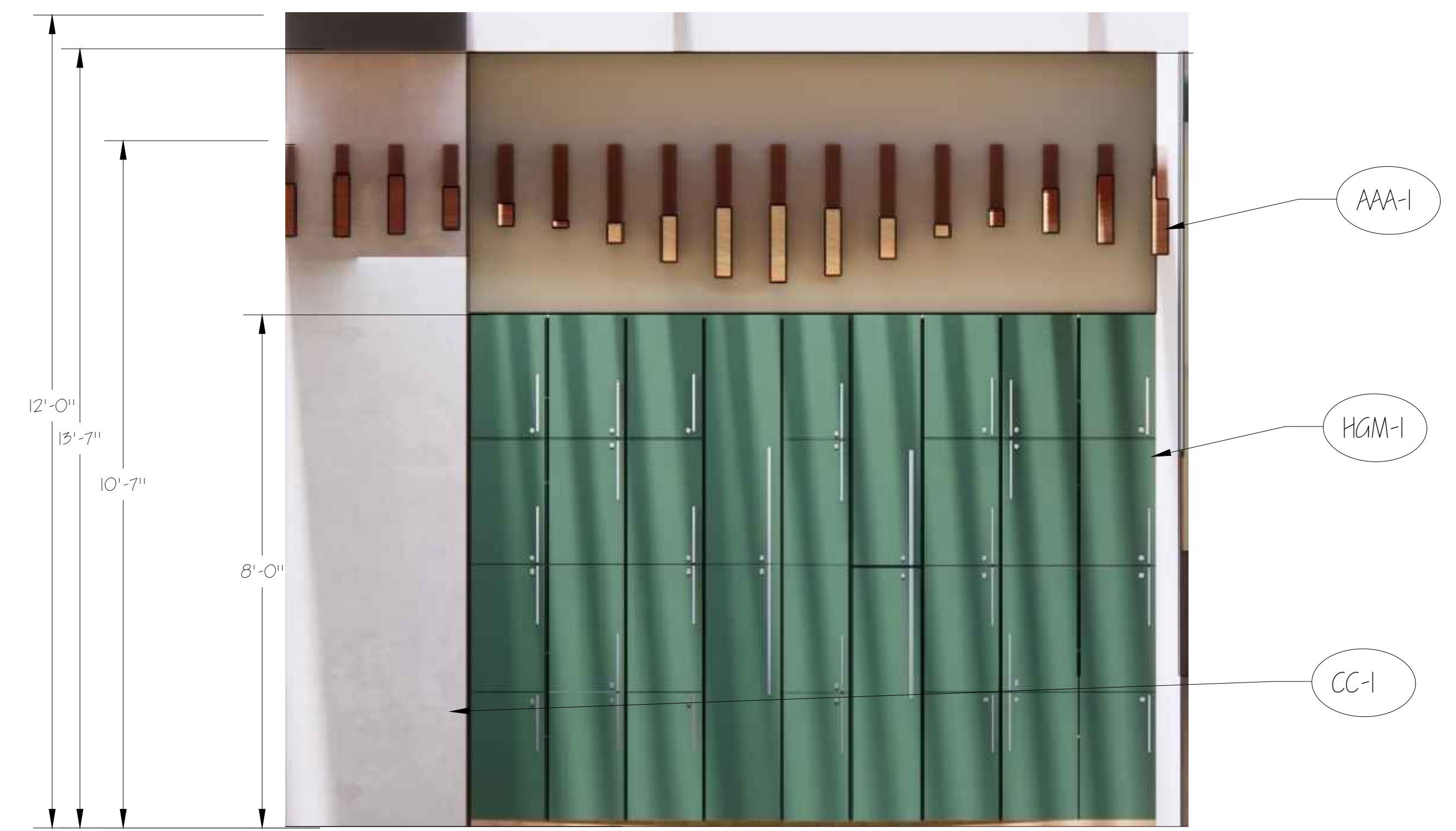
QUAD SOLUTIONS
STUDIO

SHEET CONTENTS:

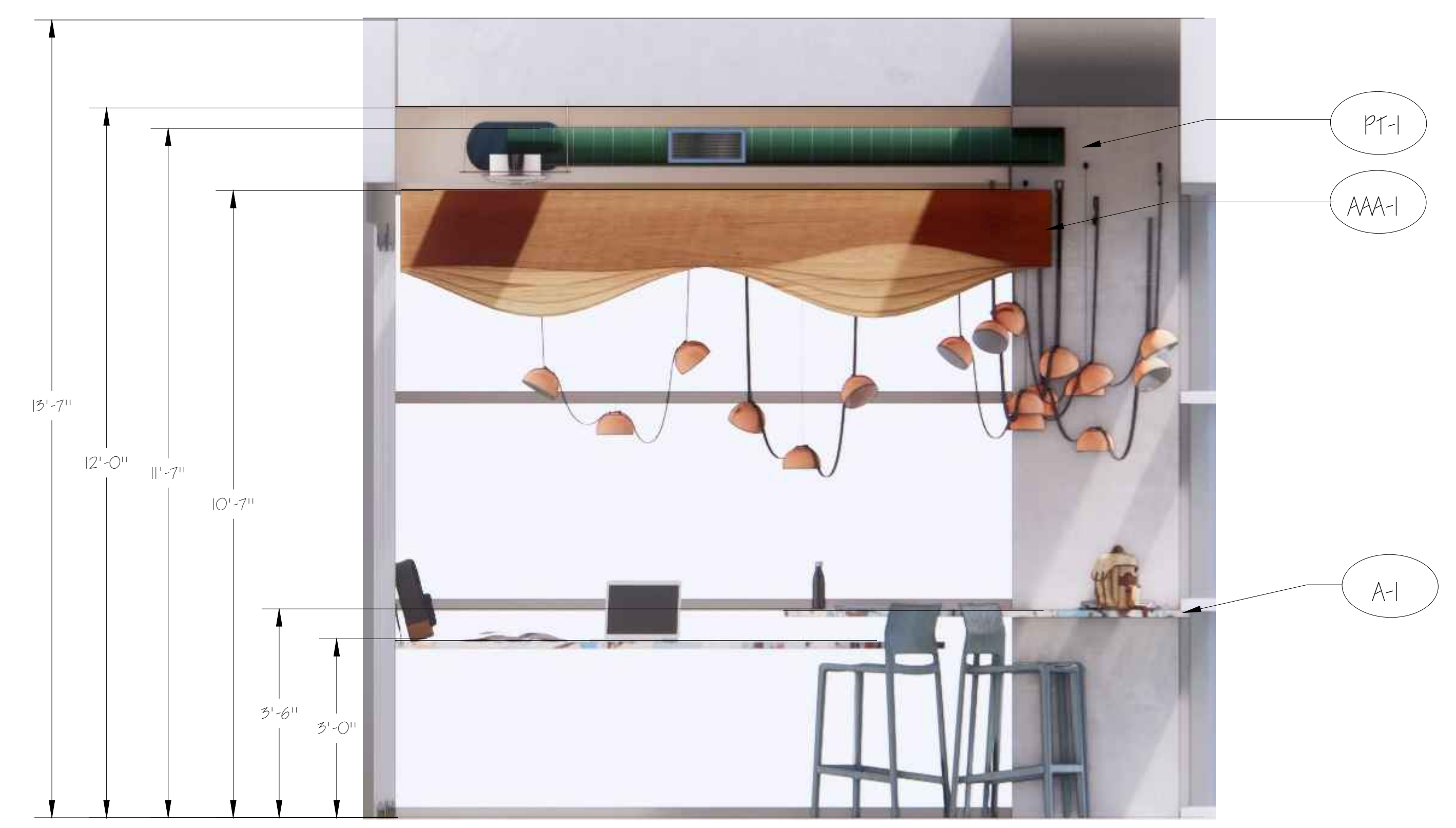
LOCKER/ STUDY
HUB SECTION
ELEVATION

SHEET:

ID7.1

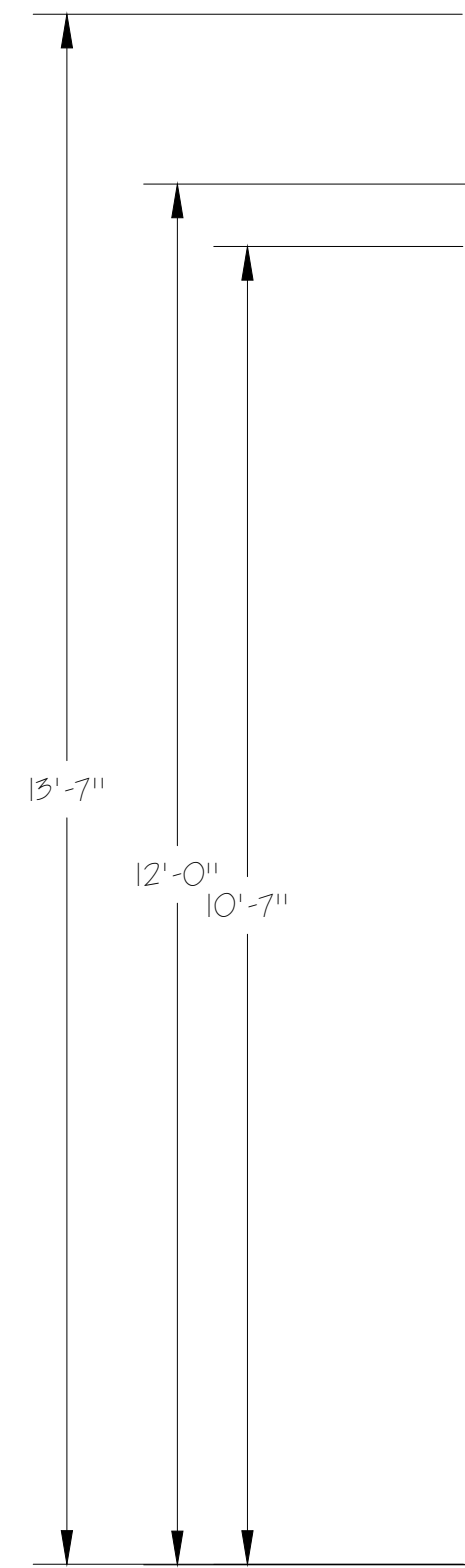


1 RECEPTION AREA LOCKERS SECTION ELEVATION
SCALE: 1/ 2" = 1'-0"

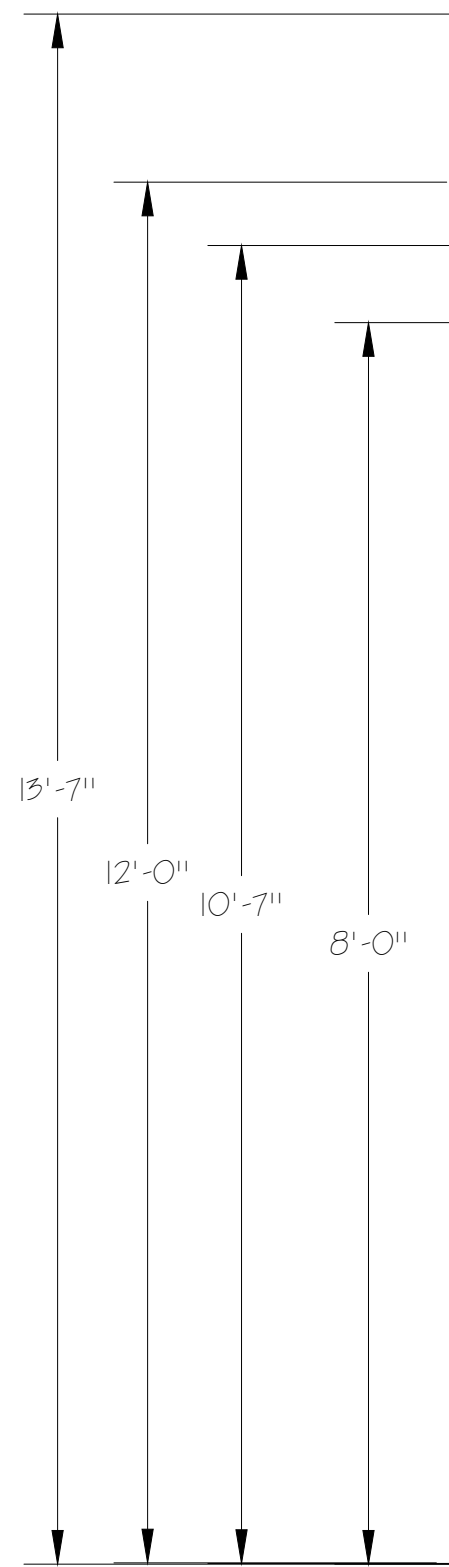


2 STUDY HUB ENTRANCE SECTION ELEVATION
SCALE: 1/ 2" = 1'-0"

- GENERAL NOTES
- ELEVATIONS ARE FOR CONCEPT PURPOSES ONLY.
 - REFER TO FURNITURE PLAN SHEET ID-3 FOR FURTHER FURNITURE PLACEMENT INFORMATION.
 - REFER TO CONCEPT RENDERINGS SHEET ID-6 FOR FURTHER CEILING BAFFLE DETAILS.
 - FOR FURTHER FURNITURE AND FINISH INFORMATION REFER TO DESIGN DEVELOPMENT PRESENTATION.
 - DO NOT SCALE THE DRAWING.
 - FOR FINISH DETAIL REFERENCE REFER TO FINISH SCHEDULE PAGE ID4.1



1 LECTURE ROOM SECTION ELEVATION
SCALE: 1/2" = 1'-0"



2 LECTURE ROOM SECTION ELEVATION
SCALE: 1/2" = 1'-0"

GENERAL NOTES

- ELEVATIONS ARE FOR CONCEPT PURPOSES ONLY.
- REFER TO FURNITURE PLAN SHEET ID-3 FOR FURTHER FURNITURE PLACEMENT INFORMATION.
- REFER TO CONCEPT RENDERINGS SHEET ID-6 FOR FURTHER CEILING BAFFLE DETAILS.
- FOR FURTHER FURNITURE AND FINISH INFORMATION REFER TO DESIGN DEVELOPMENT PRESENTATION.
- DO NOT SCALE THE DRAWING.
- NON LIGHT PENDENT SPHERE ARE ACOUSTIC MATERIAL (SLALOM MANUFACTURER / WHITE W999) REFER TO THE DD.



PROJECT:
COMMERCIAL COURSE PROJECT
HCC COLEMAN BIOTECHNOLOGY
CENTER

COMMERCIAL DESIGN

INDS 1345

REVISIONS:

6		
5		
4		
3		
2		
1		

DATE: APR 16TH, 2025

DRAFTED BY:

QUAD SOLUTIONS
STUDIO

SHEET CONTENTS:

LECTURE ROOM
SECTION
DETAILS

SHEET:

ID7.2



PROJECT:
COMMERCIAL COURSE PROJECT
HCC COLEMAN BIOTECHNOLOGY
CENTER

COMMERCIAL DESIGN

INDS 1345

REVISIONS:

6		
5		
4		
3		
2		
1		

DATE: APR 16TH, 2025

DRAFTED BY:

QUAD SOLUTIONS
STUDIO

SHEET CONTENTS:

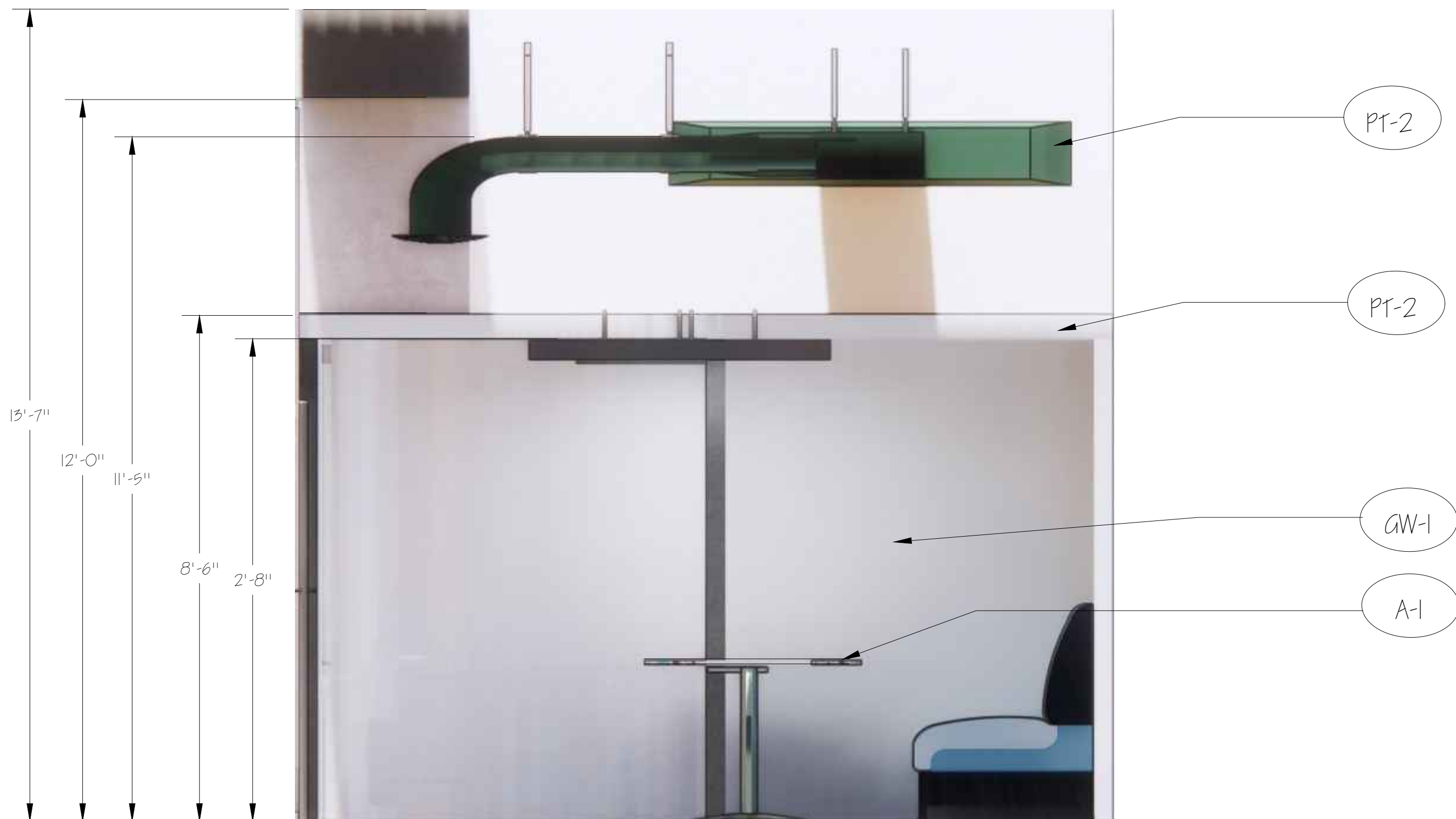
POD
SECTION DETAILS

SHEET:

ID7.3



1 COLLABORATIVE PODS ELEVATION
SCALE: 1/2" = 1'-0"



2 STATIONARY ADA PODS SECTION ELEVATION
SCALE: 1/2" = 1'-0"

GENERAL NOTES

- SECTIONS ARE FOR CONCEPT PURPOSES ONLY.
- REFER TO FURNITURE PLAN SHEET ID-3 FOR FURTHER FURNITURE PLACEMENT INFORMATION.
- REFER TO CONCEPT RENDERINGS SHEET ID-6 FOR FURTHER CEILING BAFFLE DETAILS.
- FOR FURTHER FURNITURE AND FINISH INFORMATION REFER TO DESIGN DEVELOPMENT PRESENTATION.
- DO NOT SCALE THE DRAWING.



1 HCC COLEMAN BIOTECHNOLOGY - RECEPTION AREA RENDER
RENDER FOR CONCEPT PURPOSE ONLY



2 HCC COLEMAN BIOTECHNOLOGY - LECTURE ROOM RENDER
RENDER FOR CONCEPT PURPOSE ONLY

- GENERAL NOTES
- RENDERS ARE FOR CONCEPT PURPOSES ONLY.
 - HVAC SHOWN IN LECTURE ROOM RENDER IS FOR CONCEPT AND VISUALIZATION PURPOSES ONLY.
 - RECEPTION RENDER SHOWCASES CEILING BAFFLE DESIGNS SHOWN ON RCP SHEET 10-4.
 - LECTURE ROOM RENDER SHOWCASES HVAC SYSTEM FINISH AND CONFIGURATION MENTIONED ON RCP SHEET 10-4.
 - DO NOT SCALE THE DRAWING.



PROJECT:
COMMERCIAL COURSE PROJECT
HCC COLEMAN BIOTECHNOLOGY
CENTER

COMMERCIAL DESIGN
INDS 1345

REVISIONS:		
6		
5		
4		
3		
2		
1		

DATE: APR 16TH, 2025

DRAFTED BY:
QUAD SOLUTIONS
STUDIO

SHEET CONTENTS:
CONCEPT
RENDERINGS

SHEET:
108.1