



Designed by: Haleh Mirdamadi

Family Profile

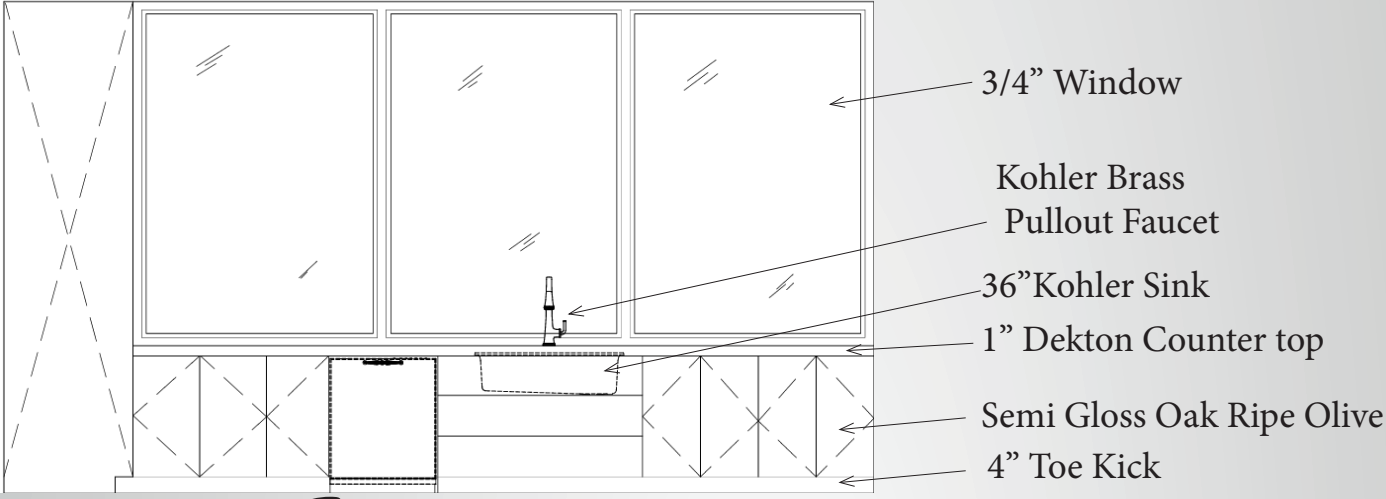
This family consists of a health-conscious couple in their mid-40s, working remotely or in hybrid roles within the tech and creative industries, who prioritize work-life balance. They have two homeschooled children, aged 10 and 14, engaged in a global, experiential learning curriculum, and share their home with a 75-year-old elderly parent, requiring accessible and adaptable spaces for aging in place. Their two medium-sized dogs are cherished members of the household. The family leads a sustainable lifestyle, emphasizing renewable energy, zero-waste practices, and smart technology to reduce their environmental impact. They integrate indoor-outdoor living, biophilic design, and dedicated spaces for physical activity and mindfulness to support their physical and mental well-being. Flexibility and adaptability in their home are essential to accommodate their evolving needs.

Process



Exterior Material

The exterior design combines modern aesthetics with durable, sustainable materials suited to Seattle's weather. White fiber cement panels provide a crisp, clean look, offering excellent resistance to moisture and a low-maintenance finish. Contrasting black fiberglass-reinforced panels (FRP) add a bold, contemporary touch while delivering exceptional strength and weather resilience. Warm European oak accents balance the modern elements, introducing natural texture and elegance.



Kitchen Elevation



Finishes

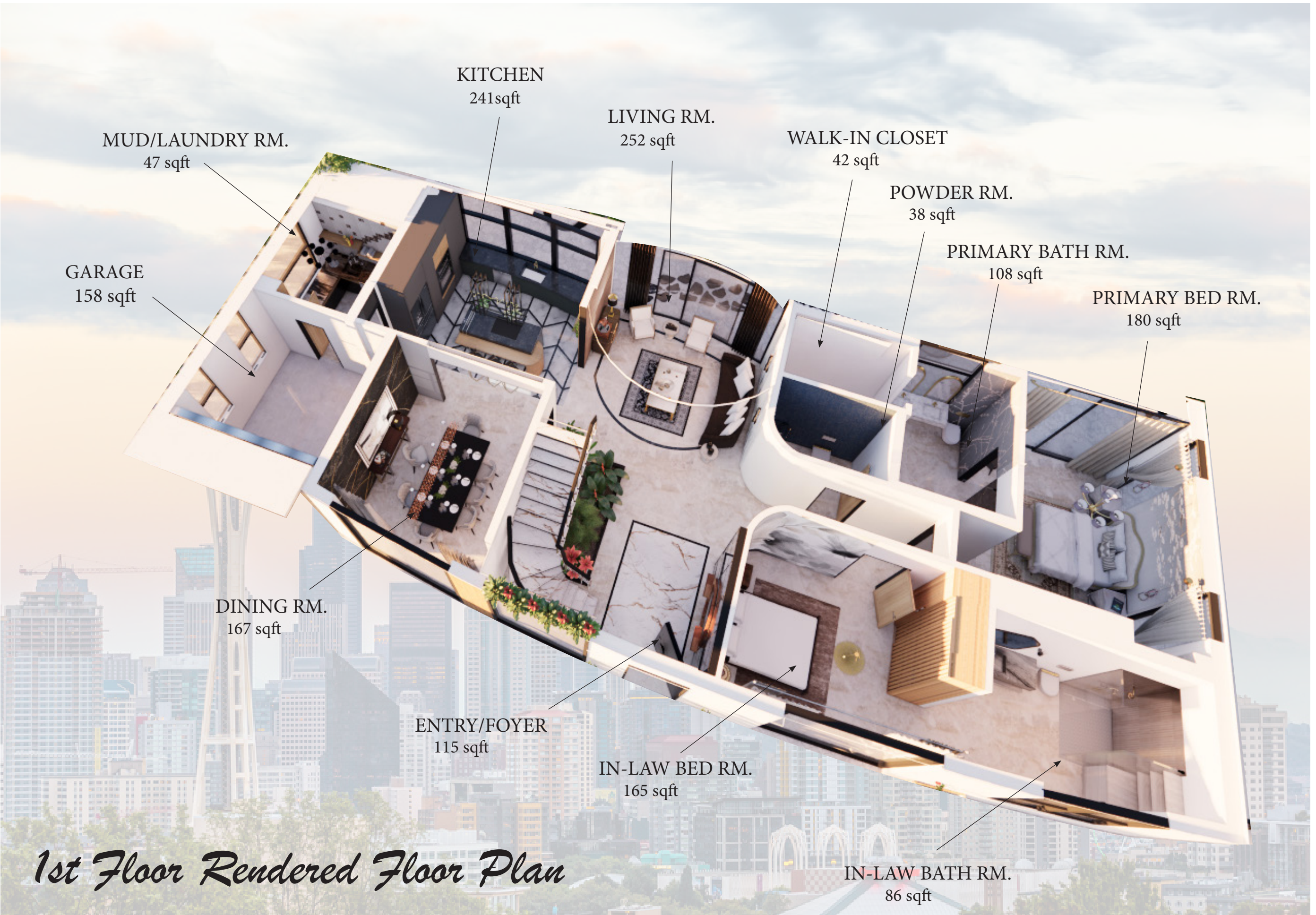


Concept Board



Design Concept

“Circulus Vita” is a futuristic home design blending organic elements, technology, and health-oriented spaces into a life-centered living environment. Its name, derived from Latin terms for “circle” and “life,” reflects the curved floor plan and the home’s emphasis on wellness, sustainability, and mindful living. Designed for Mr. and Mrs. Sims, the house features eco-friendly innovations, renewable energy systems, and rainwater harvesting for irrigation, promoting a zero-waste lifestyle. Recycled materials and eco-friendly finishes further reinforce its sustainable ethos while maintaining a natural, organic aesthetic. The interior design uses a moody color palette of deep, rich tones in intimate spaces, complemented by soft greens and earthy hues in shared areas to evoke a connection with nature. These choices, combined with the natural warmth of wood, create a cozy atmosphere to counter Seattle’s often gloomy weather, helping reduce feelings of depression. Large windows flood the home with natural light, enhancing mood, wellness, and the connection to the surrounding landscape. The curved layout integrates seamlessly with straight interior designs, offering smooth transitions between spaces and ostering a calming sense of flow and continuity.



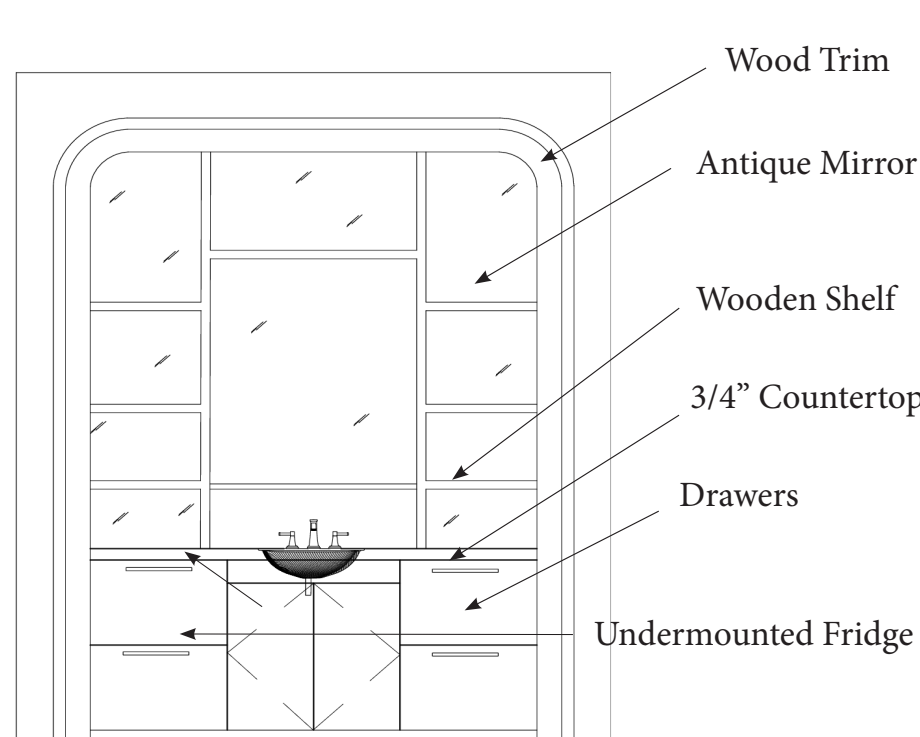
1st Floor Rendered Floor Plan



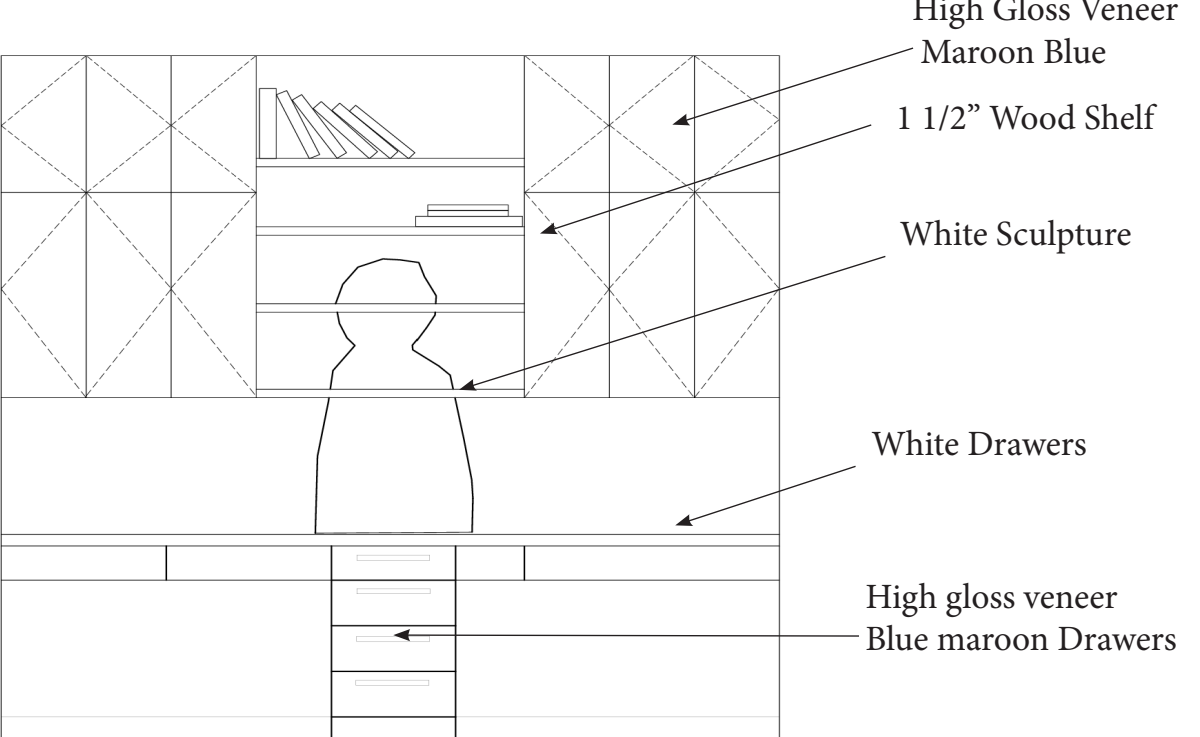
Kitchen



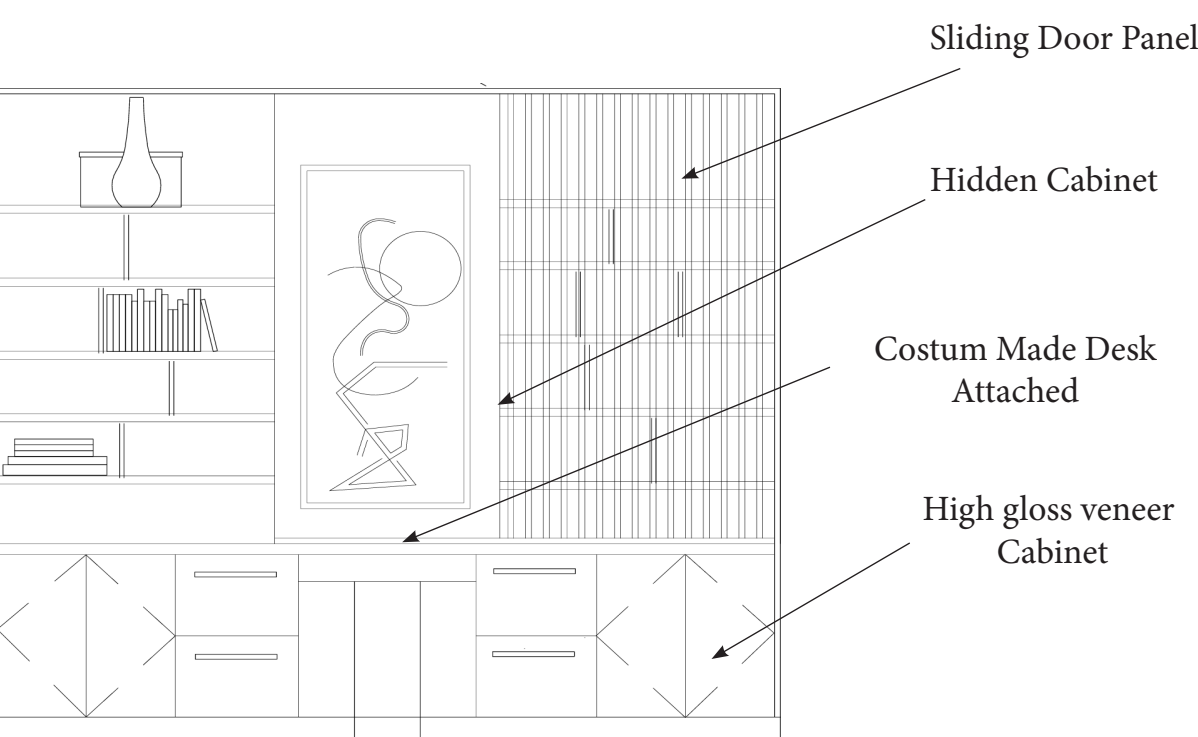
Living Room View



Wet Bar Elevation



Study Elevation

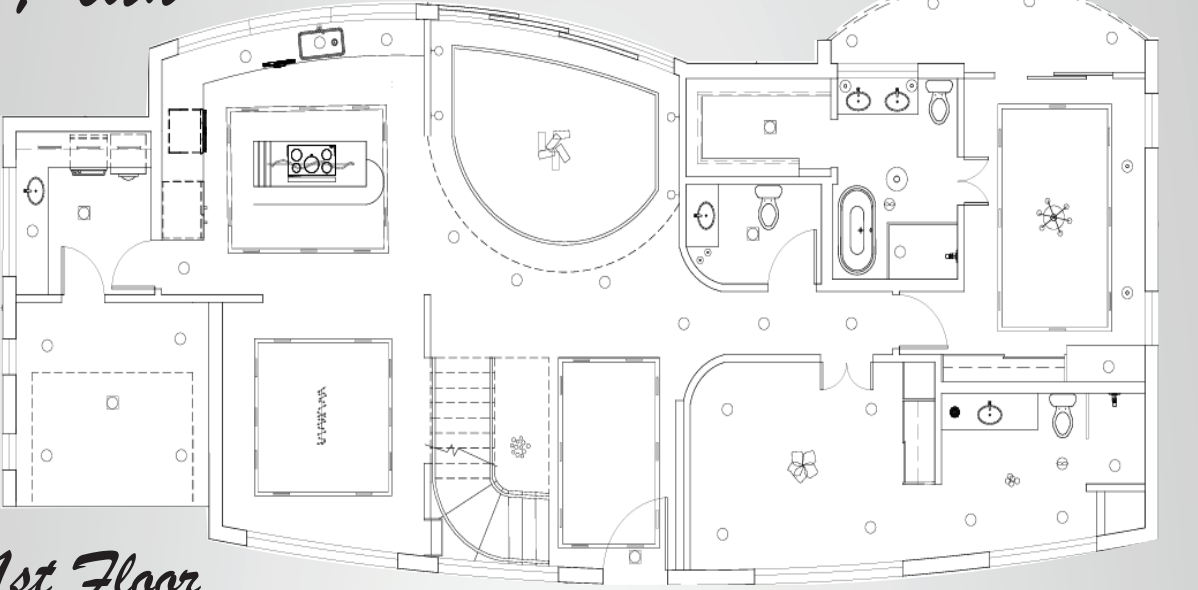


Office Elevation

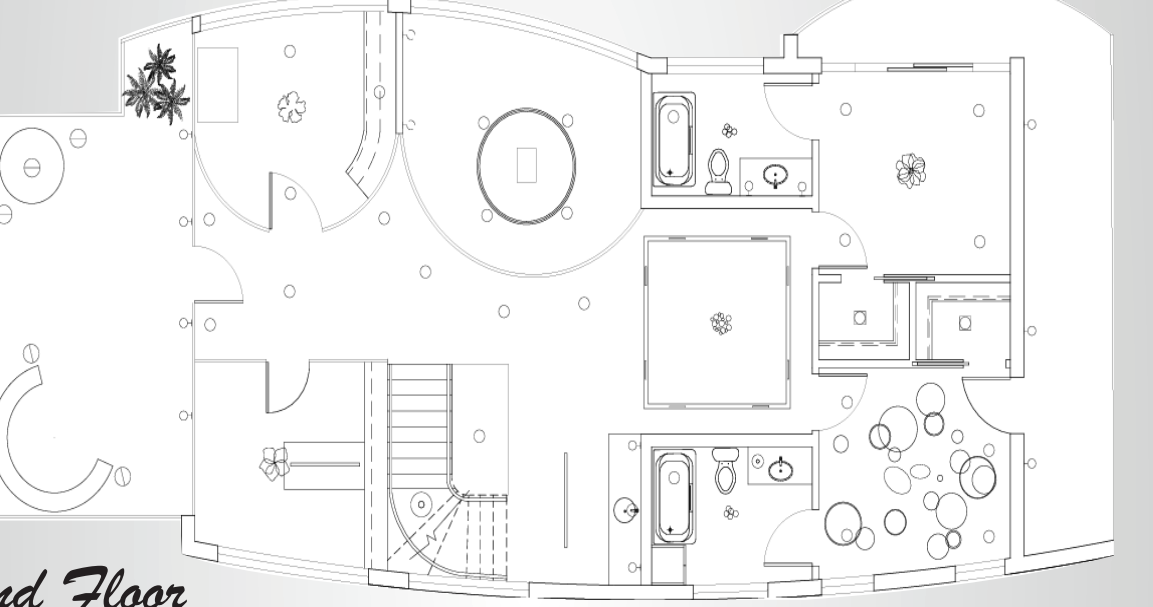
Designing For The Future

- Renewable energy solutions include solar panels with smart energy management.
- Advanced water recycling systems support irrigation and non-potable uses, reducing consumption.
- Zero-waste practices feature built-in composting, recycled materials, and upcycled vintage pieces.
- Eco-friendly materials like low-VOC paints, reclaimed wood, and biodegradable textiles are used.
- Green roofs provide natural insulation and promote biodiversity.
- Smart Windows Optimize natural light and thermal insulation for energy efficiency.
- Reduce heating, cooling, and lighting costs.
- Biophilic design elements, including natural light and calming spaces, enhance mental health.
- Smart systems automate lighting, temperature, and security, powered by renewable energy.
- Health-monitoring tools track air quality, hydration, and sleep patterns.

RCP Plan



1st Floor



2nd Floor



2nd Floor Rendered Floor Plan



Home Office



Study Room

Halzy Design

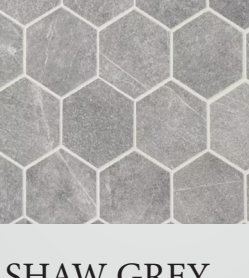


Wet Bar/TV Area

Finishes



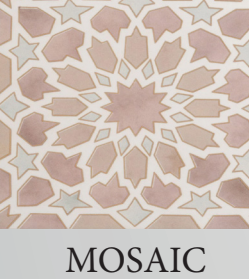
PEARL MOSAIC



SHAW GREY



FISH SCALE CERAMIC



MOSAIC CO-FLORENCE



BRICK CLAY LOOK



CUSTOM MADE DESIGN WOOD CABINET DOOR



Jaime Dining Chair, Meg Ash



Folly Gesso Ceiling Light



Wabi-Sabi Pendant Light

